

LMB-FDC

Flow Divider/Combiner Valve

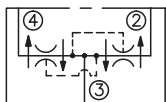
DESCRIPTION

A high accuracy pressure-compensated flow divider/combiner valve

OPERATION

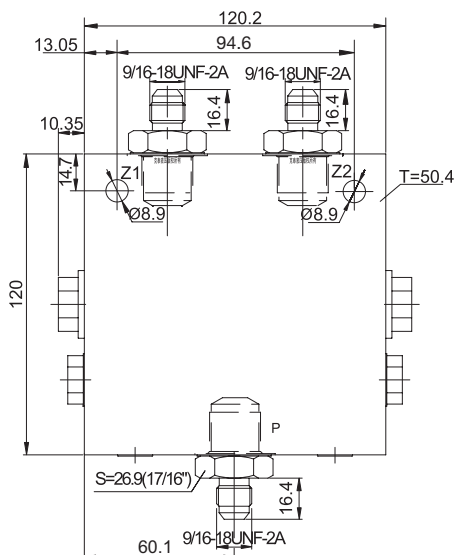
In the dividing mode, the valve will divert input flow from port "P" to ports "Z1" and "Z2" based on the ratio specified, regardless of operating pressure. When the flow direction is reversed the valve will combine flows from "Z1" and "Z2" to port "P".

SYMBOL



SPECIFICATIONS

Operating Pressure	345bar
Flow Options	A: 1.4-16.6 l/min.; B: 1.8-26 l/min.; C: 7.3-36.5 l/min.
Flow Accuracy	±1% at max. input flow ±3% at min. input flow
	Pressure drop at maximum rated input flow 30 bar Pressure drop at minimum rated input flow 7 bar
Temperature	-40°F to +250°F (-40°C to +120°C)
Filtration	See page N-1
Fluids	Mineral-based fluids with viscosities of 7.4 to 420 cSt.
Housing Material	Steel & Ductile iron rated to 350bar



Note: Cleanliness ISO 16/12 is required for actuators such as cylinder, motor.

TO ORDER

LMB - FDC - * - * * - * *

1

2

3

4

1 Function
FDC=Flow Divider/Combiner Valve

3 Ratio
Omit= 50:50
4:6=40:60

4 Port Size
4G=G 1/2
※Other port sizes are available

2 Flow Rate
A=1.4-16.6L/min
B=1.8-26.0L/min
C=7.3-36.5L/min