

LFC-06

Flow Control With Reverse
Flow Check

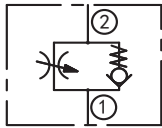
DESCRIPTION

A cartridge-style adjustable flow control valve with reverse flow check

OPERATION

The valve varies flow restriction by adjusting needle in or out. Flow is metered from ② to ①. Free reverse flow is from ① to ②.

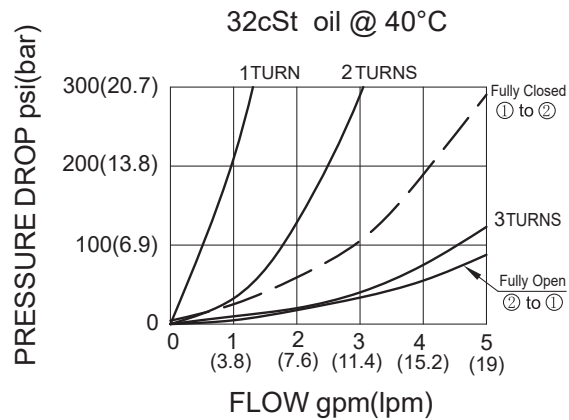
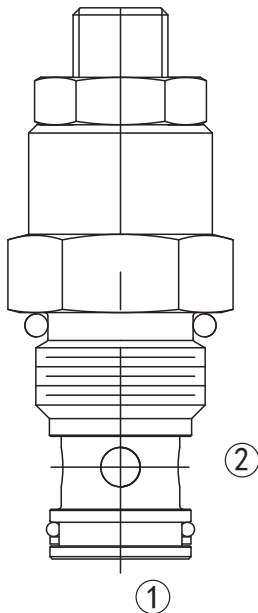
SYMBOL



SPECIFICATIONS

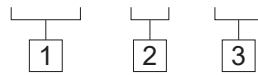
Max.Operating Pressure	250bar
Flow	See PRESSURE DROP VS.FLOW graph.
Internal Leakage	3 drops/min max. at shut-off
Temperature	-40°F to +250°F(-40°C to +120°C)
Filtration	See Page N-1
Fluids	Mineral-based fluids with viscosities of 7.4 to 420 cSt.
Cavity	HYDAC FC06-2,See page M-23
Housing Material	6061-T6 aluminum alloy rated to 207bar, Steel & Ductile iron rated to 350bar

PRESSURE DROP VS.FLOW



TO ORDER

LFC - 06 - * *



1 Function

LFC=Adjustable Cartridge Flow Control Valve

2 Size

06=06 Size

3 Port Size

Omit=None

4T=SAE4

6T=SAE6

2G=G 1/4

3G=G 3/8

※Other port sizes are available

F

INSTALLATION DIMENSIONS

Unit=Millimeters

