

LEC-10-42

Flow On Demand Pressure
Compensator With Static Load Sense

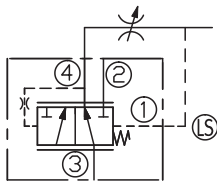
DESCRIPTION

A cartridge-style, priority on demand, pressure compensator with a static load sense.

OPERATION

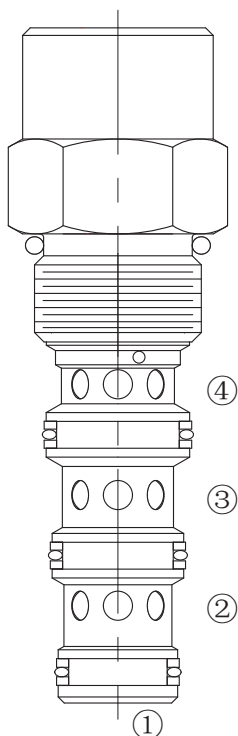
With inlet flow at port ③, the valve will deliver required priority flow at port ④ regardless of load pressure. Excessive flow exits at port ② and port ① is the load sense port. All ports may be fully pressurized

SYMBOL

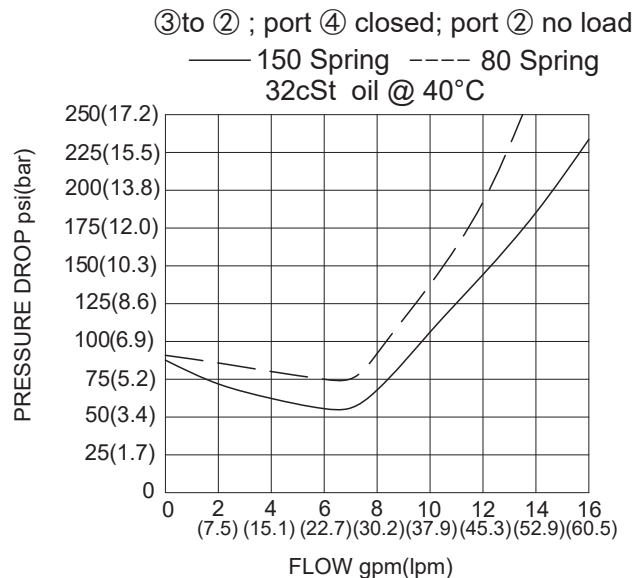


SPECIFICATIONS

Operating Pressure	240bar
Input Flow Rate	45.4lpm.
Maximum Regulated Flow	37.9lpm with 10.3bar compensator spring 30.2lpm with 5.5bar compensator spring
Temperature	-40°F to +250°F(-40°C to +120°C)
Filtration	See Page N-1
Fluids	Mineral-based fluids with viscosities of 7.4 to 420 cSt.
Cavity	10-4, See page M-2
Housing Material	6061-T6 aluminum alloy rated to 207bar, Steel & Ductile iron rated to 350bar



PRESSURE DROP VS.FLOW



TO ORDER

LEC - 10 - 42 - ** - **

1

2

3

4

1 Function
 LEC=Pressure Compensator,
 Priority On Demand

3 Compensator Spring
 80=80psi(5.5bar)
 150=150psi(10.3bar)

4 Port Size
 Omit= None
 6T=SAE6
 8T=SAE8
 2G=G 1/4
 3G=G 3/8

2 Size
 10=10 Size

※See page K-6 for detail of housing
 ※Other port sizes are available

F

INSTALLATION DIMENSIONS

Unit=Millimeters

