

LDSCH

Hot Oil Shuttle Valve

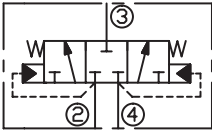
DESCRIPTION

A cartridge-style low side three-position, hot oil shuttle valve

OPERATION

Low-side (hot oil) shuttle cartridges allow hot oil to be diverted from the low pressure side of a closed loop system. When both work ports (ports ② and ④) are at equal pressures the valve is spring-centered to an all-ports-blocked position. When one of the work ports (port ② or ④) sees a higher pressure the opposite work port is connected to the common port (port ③).

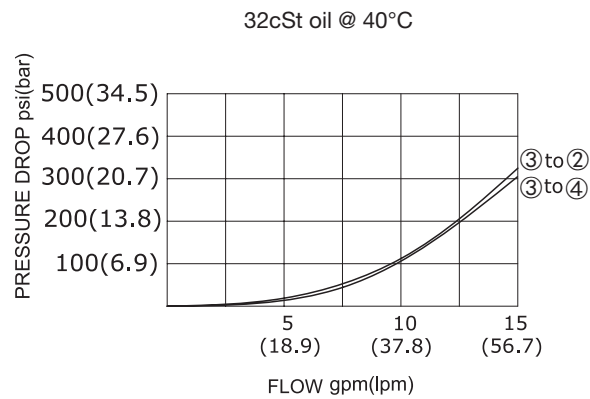
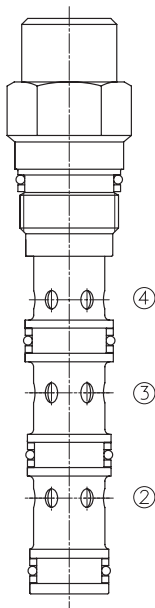
SYMBOL



SPECIFICATIONS

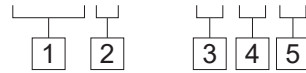
Operating Pressure	350bar
Flow	See PRESSURE DROP VS.FLOW graph.
Temperature	-40°F to +250°F(-40°C to +120°C)
Filtration	See page N-1
Fluids	Mineral-based fluids with viscosities of 7.4 to 420 cSt.
Cavity	SUN T-31A, See page M-10
Housing Material	Steel & Ductile iron rated to 350bar

PRESSURE DROP VS.FLOW



TO ORDER

LDS * H - X * N



1 Function
LDS=Cartridge Shuttle Valve

2 Flow
C=60L/min

3 Control
X=Non-adjustable

4 Shifting Pressure
H:200psi(14Bar)
G:150psi(10.5Bar)

5 Seal Kits
N=Buna N
V=Viton

※ See page K-27 for detail of housing
※ Other port sizes are available

D

INSTALLATION DIMENSIONS

Unit=Millimeters

