

# LDRV8-10

Direct-acting Differential Area Relief Valve

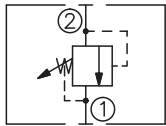
## DESCRIPTION

A cartridge-style direct-acting differential area poppet-type relief valve

## OPERATION

The valve blocks flow from ② to ① until sufficient pressure is present at ② to force the poppet from its seat.

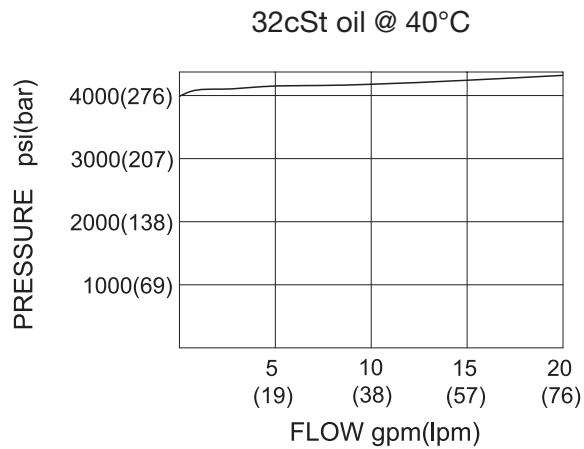
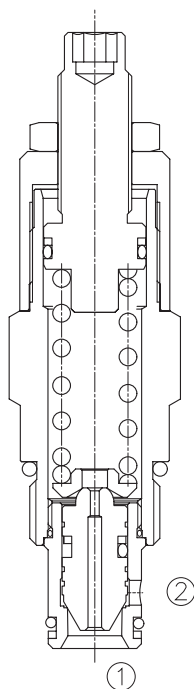
## SYMBOL



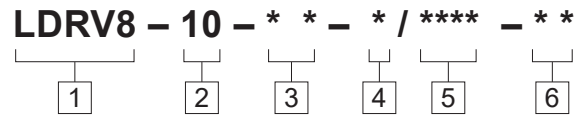
## SPECIFICATIONS

Operating Pressure	350bar
Flow	See PRESSURE DROP VS. FLOW graph.
Internal Leakage	5 drops/min max. to 80% of nominal setting
Reseat Pressure	85% of cracking pressure (cracking pressure at 0.95 lpm /0.25 gpm)
Standard Spring Ranges	38 to 350 bar, preset: 175bar
Temperature	-40°F to +250°F(-40°C to +120°C)
Filtration	See page N-1
Fluids	Mineral-based fluids with viscosities of 7.4 to 420 cSt.
Cavity	10-2, See page M-2
Housing Material	Steel & Ductile iron rated to 350bar

## PRESSURE DROP VS.FLOW



**TO ORDER**



- 1 Function**  
LDRV8=Direct-acting  
Differential Area  
Poppet-type Relief Valve

---

- 2 Size**  
10=10 Size

---

- 3 Spring Ranges**  
50=550-5000psi(38-350bar)  
Preset:2540psi(175bar)

- 4 Adjustment**  
K= 1-1/2"Dia Knob  
Omit = 1/4" Hex Allen Head

---

- 5 Optional Pressure Setting**  
Omit=Standard Setting  
Example:0150=150bar

- 6 Port Size**  
Omit=None  
6T=SAE6  
8T=SAE8  
3G=G 3/8  
4G=G 1/2

※ See page K-4 for detail of housing  
 ※ Other port sizes are available



**INSTALLATION DIMENSIONS**

Unit=Millimeters

