

# LNRV-08M-2

Direct-acting Relief Valve

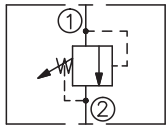
## DESCRIPTION

A cartridge-style direct-acting poppet-type relief valve

## OPERATION

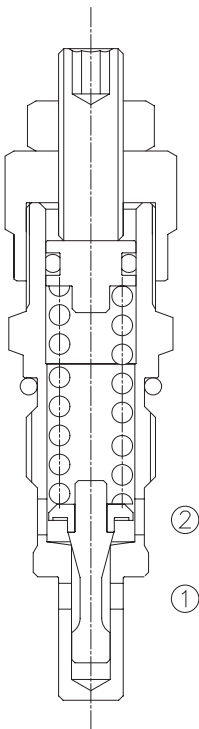
Flow is blocked from ① to ② until pressure increases to meet the selected valve setting, lifting the poppet from its seat and allowing relief flow through ② to tank. Pressure at ② is additive to the relief setting of the valve. The unique poppet design provides enhanced stability at all flows and pressures.

## SYMBOL

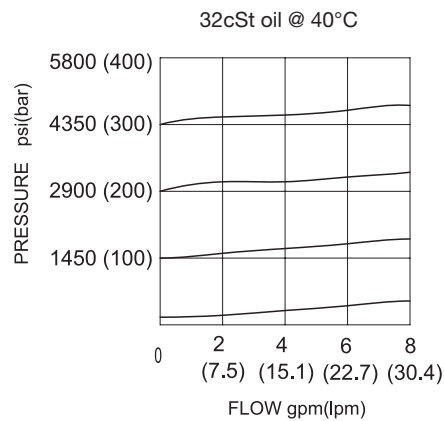


## SPECIFICATIONS

Operating Pressure	350bar
Flow	See PRESSURE DROP VS. FLOW graph.
Internal Leakage	5 drops/min max. to 85% of nominal setting
Reseat Pressure	85% of cracking pressure (cracking pressure at 0.95 lpm /0.25 gpm)
Standard Spring Ranges	5 to 50 bar; preset 30 bar 30 to 100 bar ; preset 70 bar 50 to 210 bar ; preset 160 bar 100 to 350 bar ; preset 250 bar
Temperature	-40°F to +250°F(-40°C to +120°C)
Filtration	See page N-1
Fluids	Mineral-based fluids with viscosities of 7.4 to 420 cSt.
Cavity	08M-2, See page M-17
Housing Material	Steel & Ductile iron rated to 350bar



## PRESSURE DROP VS.FLOW



**TO ORDER**

**LNRV – 08M – 2 – \* / \* \* \* \* – \* \***



<b>1 Function</b> LNRV=Direct-acting Relief Valve	<b>3 Spring Ranges</b> 7=70-700psi(5-50bar)      Preset:440psi(30bar) 14=440-1400psi(30-100bar)      Preset:1000psi(70bar) 30=730-3000psi(50-210bar)      Preset:2320psi(160bar) 50=1450-5000psi(100-350bar)      Preset:3630psi(250bar)	<b>5 Port Size</b> Omit=None 6T=SAE 6 8T=SAE 8
<b>2 Size</b> 08M-2=08M-2 Size	<b>4 Optional Pressure Setting</b> Omit=Standard Setting Example:0250=250bar	※Other port sizes are available

**INSTALLATION DIMENSIONS**

Unit=Millimeters

