

LFD5-12

Flow Divider/Combiner Valve

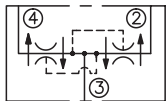
DESCRIPTION

A cartridge-style pressure-compensated flow divider/combiner valve

OPERATION

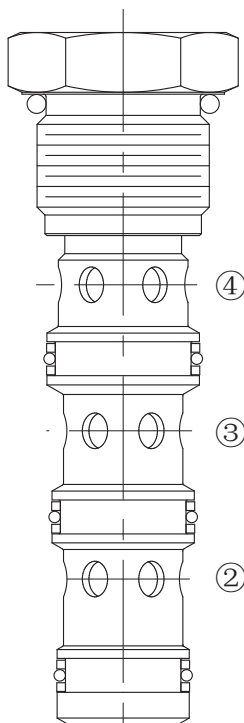
In the dividing mode, the valve will divert input flow from port ③ to ports ② and ④, based on the ratio specified, regardless of operating pressure. The valve will combine input flow from ② and ④.

SYMBOL

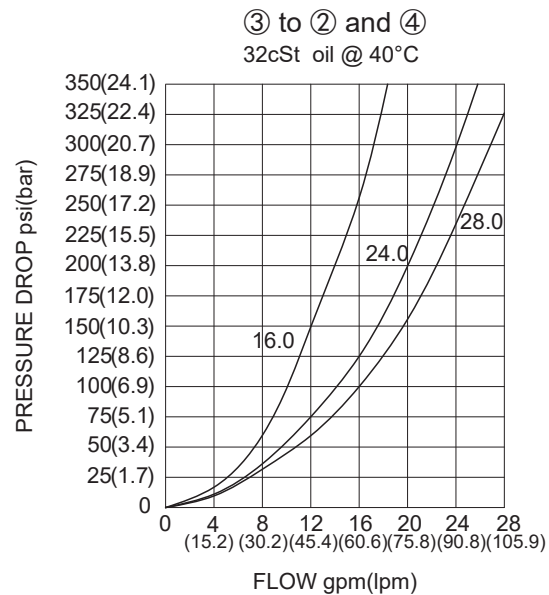


SPECIFICATIONS

Operating Pressure	345bar
Flow Options	input flow: 15-60 lpm; ratio:50:50; model: LFD5-12-16.0 input flow: 23-90 lpm; ratio:50:50; model: LFD5-12-24.0 input flow: 30-106 lpm; ratio:50:50; model: LFD5-12-28.0
Flow Maintenance Accuracy	10% of inlet flow for Models 16.0 and 24.0 15% of inlet flow for Model 28.0
Temperature	-40°F to +250°F (-40°C to +120°C)
Filtration	See Page N-1
Fluids	Mineral-based fluids with viscosities of 7.4 to 420 cSt.
Cavity	12-4, See page M-27
Housing Material	6061-T6 aluminum alloy rated at 207Bar, Steel & Ductile iron rated at 350Bar

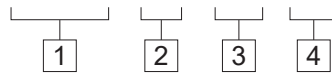


PRESSURE DROP VS.FLOW



TO ORDER

LFD5 - 12 - ** - **



1 Function

LFD5= Cartridge-style Pressure-compensated Flow Divider/Combiner Valve

3 Flow Options

16.0=input flow: 15-60 lpm; ratio: 50:50;
 24.0=input flow: 23-90 lpm; ratio: 50:50;
 28.0=input flow: 30-106 lpm; ratio: 50:50;

4 Port Size

Omit= None
 10T=SAE10
 12T=SAE12
 6G=G 3/4

2 Size

12=12 Size

※ See page K-31 for detail of housing
 ※ Other port sizes are available

F

INSTALLATION DIMENSIONS

Unit=Millimeters

