

# LFC-12

Flow Control With Reverse  
Flow Check

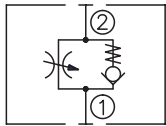
## DESCRIPTION

A cartridge-style adjustable flow control valve with reverse flow check

## OPERATION

The valve varies flow restriction by adjusting needle in or out. Flow is metered from ② to ①. Free reverse flow is from ① to ②.

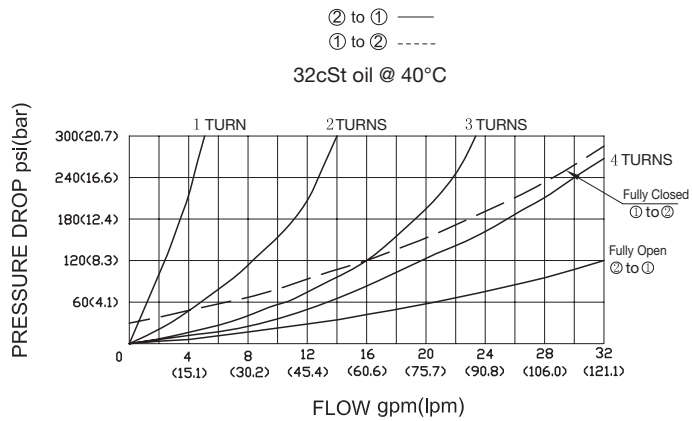
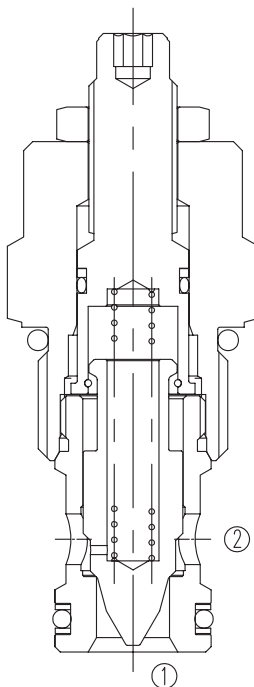
## SYMBOL



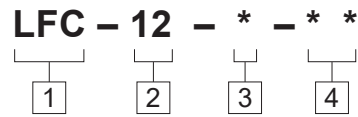
## SPECIFICATIONS

Operating Pressure	240bar
Flow	See PRESSURE DROP VS.FLOW graph.
Internal Leakage	3 drops/min Max. at 240bar.
Temperature	-40°F to +250°F(-40°C to +120°C)
Filtration	See page N-1
Fluids	Mineral-based fluids with viscosities of 7.4 to 420 cSt.
Cavity	12-2, See page M-3
Housing Material	6061-T6 aluminum alloy rated to 207bar, Steel & Ductile iron rated to 350bar

## PRESSURE DROP VS.FLOW



**TO ORDER**



**1 Function**

LFC=Adjustable Cartridge Flow Control Valve

**2 Size**

12=12 Size

**3 Adjustment**

Omit=3/16" Hex Allen Head

**4 Port Size**

Omit=None

10T=SAE10

12T=SAE12

6G=G 3/4

8G=G 1

※ See page K-8 for detail of housing

※ Other port sizes are available

F

**INSTALLATION DIMENSIONS**

Unit=Millimeters

