

LFC-10

Flow Control With Reverse
Flow Check

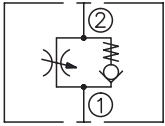
DESCRIPTION

A cartridge-style adjustable flow control valve with reverse flow check

OPERATION

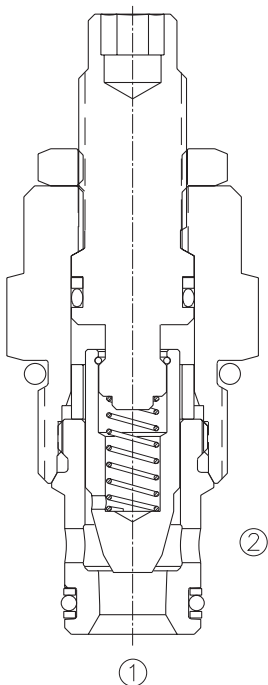
The valve varies flow restriction by adjusting needle in or out. Flow is metered from ② to ①. Free reverse flow is from ① to ②.

SYMBOL

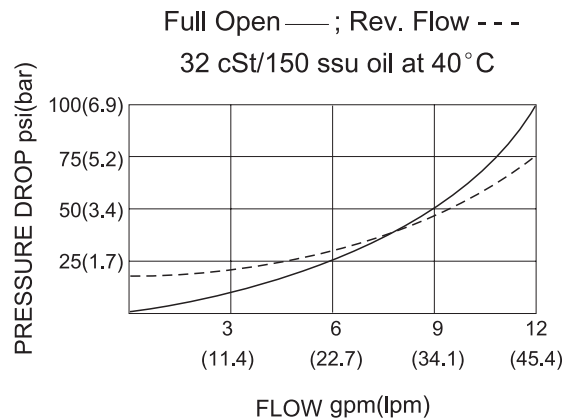


SPECIFICATIONS

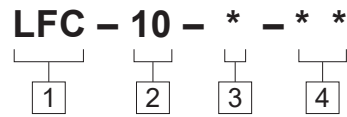
Max.Operating Pressure	250bar
Flow	See PRESSURE DROP VS.FLOW graph.
Internal Leakage	3 drops/min max. at shut-off
Temperature	-40°F to +250°F(-40°C to +120°C)
Filtration	See page N-1
Fluids	Mineral-based fluids with viscosities of 7.4 to 420 cSt.
Cavity	10-2, See page M-2
Housing Material	6061-T6 aluminum alloy rated to 207bar, Steel & Ductile iron rated to 350bar



PRESSURE DROP VS.FLOW



TO ORDER



1 Function
LFC=Adjustable Cartridge Flow Control Valve

2 Size
10=10 Size

3 Adjustment
K=1-1/2" Dia Knob
Omit=1/4" Hex Allen Head

4 Port Size
Omit=None
6T=SAE6
8T=SAE8
3G=G 3/8
4G=G 1/2

※ See page K-4 for detail of housing
※ Other port sizes are available

F

INSTALLATION DIMENSIONS

Unit=Millimeters

