

LEP-16-S3-T

Logic Element With External Pilot

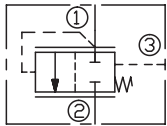
DESCRIPTION

A cartridge-style non-adjustable logic element with external pilot

OPERATION

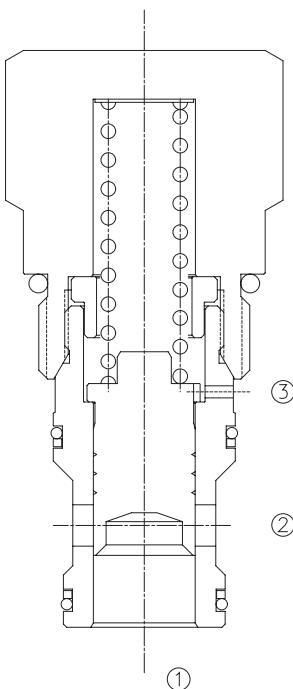
When pressure at ① rises above the selected spring bias pressure against the spool, the valve shifts to allow flow from ① to ② . Pilot pressure at ③ is additive to the spring bias pressure. The valve may be used in switching or compensation type applications.

SYMBOL

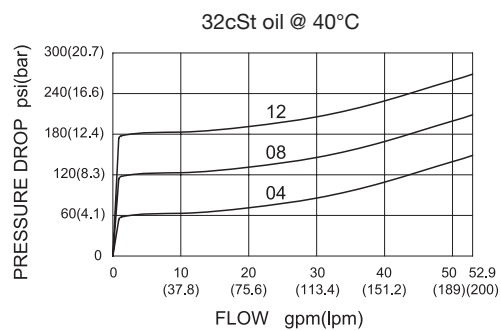


SPECIFICATIONS

Max.Operating Pressure	350bar
Flow	See PRESSURE DROP VS.FLOW graph.
Internal Leakage	200ml/min max. at 200 bar
Temperature	-40°F to +250°F(-40°C to +120°C)
Filtration	See page N-1
Fluids	Mineral-based fluids with viscosities of 7.4 to 420 cSt.
Cavity	16-S3, See page M-4
Housing Material	Steel & Ductile iron rated to 350bar



PRESSURE DROP VS.FLOW



TO ORDER

LEP - 16 - S3 - T - * * - * *

┌───┐
┌───┐
┌───┐
┌───┐
┌───┐
┌───┐

1
2
3
4
5
6

1 Function
LEP=Cartridge-style Adjustable Logic Element with External Pilot

2 Size
16=16 Size

3 Flow Path
S3=3-Way

4 Control
T=Non-adjustable

5 Cracking Pressure
04=60±20%psi(4±20%bar)
08=123±15%psi(8.5±15%bar)
12=175±10%psi(12±10%bar)

6 Port Size
Omit=None
16T=SAE 16
8G=G 1

※Other port sizes are available

INSTALLATION DIMENSIONS

Unit=Millimeters

H

