

# LCVR2-16

Check Valve

## DESCRIPTION

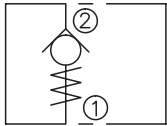
A cartridge-style poppet-type check valve

## OPERATION

When pressure at ② rises above the spring bias pressure, the poppet is pushed from its seat and flow allowed from ② to ① .

The valve is closed (checked) from ① to ②.

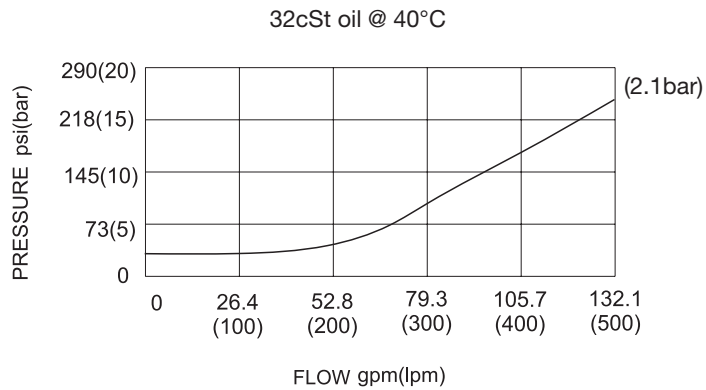
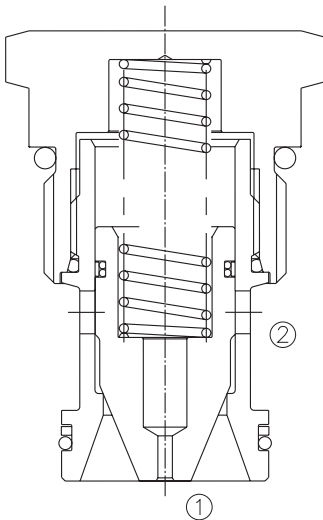
## SYMBOL



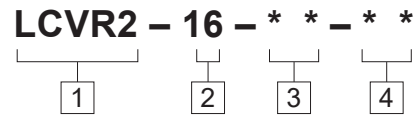
## SPECIFICATIONS

Operating Pressure	350bar
Flow	See PRESSURE DROP VS.FLOW graph.
Internal Leakage	2 drops/min max. at 350bar
Cracking Pressure	2.1bar
Temperature	-40°F to +250°F(-40°C to +120°C)
Filtration	See page N-1
Fluids	Mineral-based fluids with viscosities of 7.4 to 420 cSt.
Cavity	16-2, See page M-3
Housing Material	Steel & Ductile iron rated to 350bar

## PRESSURE DROP VS.FLOW



**TO ORDER**



**1 Function**  
LCVR2= Check Valve

**3 Cracking Pressure**  
2.1=2.1bar

**4 Port Size**  
Omit=None  
16T=SAE16  
6G=G 3/4  
8G=G 1

**2 Size**  
16=16 Size

**D**

※See page K-9 for detail of housing  
※Other port sizes are available

**INSTALLATION DIMENSIONS**

Unit=Millimeters

