

LCV-16-P

Check Valve

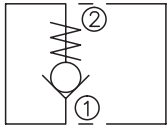
DESCRIPTION

A cartridge-style poppet-type check valve

OPERATION

Pressure at ① overcomes the spring-bias poppet and allows free flow from ① to ② . Flow in the opposite direction, from ② to ① ,is blocked by the poppet.

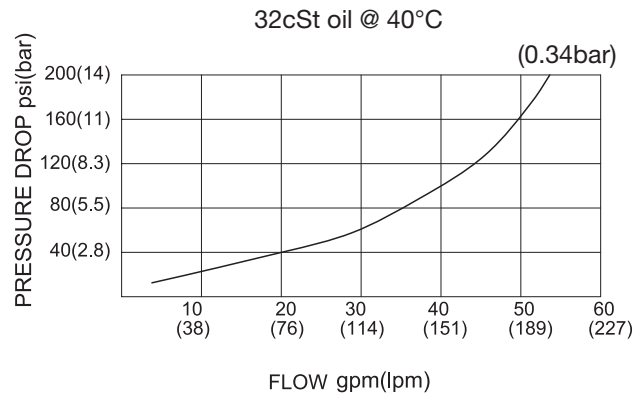
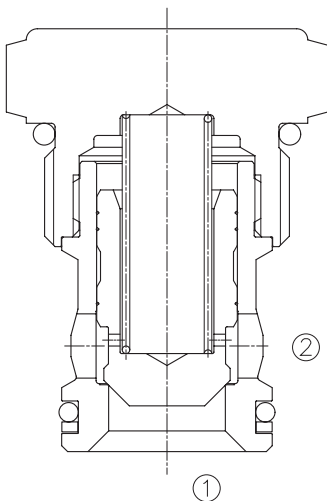
SYMBOL



SPECIFICATIONS

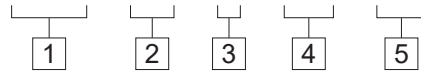
Operating Pressure	350bar
Flow	See PRESSURE DROP VS.FLOW graph.
Internal Leakage	5 drops/min max. at 350bar
Cracking Pressure	0.34=0.34bar 1.7=1.7bar 4.5=4.5bar 6.9=6.9bar
Temperature	-40°F to +250°F(-40°C to +120°C)
Filtration	See page N-1
Fluids	Mineral-based fluids with viscosities of 7.4 to 420 cSt.
Cavity	16-2,See page M-3
Housing Material	Steel & Ductile iron rated to 350bar

PRESSURE DROP VS.FLOW



TO ORDER

LCV - 16 - P - * * - * *



1 Function
LCV=Check Valve

2 Size
16=16 Size

3 Type
P=Poppet

4 Cracking Pressure
0.34=0.34bar
1.7=1.7bar
4.5=4.5bar
6.9=6.9bar

5 Port Size
Omit=None
16T=SAE16
6G=G 3/4
8G=G 1

※ See page K-9 for detail of housing

※ Other port sizes are available

D

INSTALLATION DIMENSIONS

Unit=Millimeters

