

LCV-08-P

Check Valve

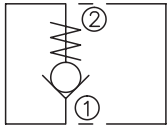
DESCRIPTION

A cartridge-style poppet-type check valve

OPERATION

Pressure at ① overcomes the spring-bias poppet and allows free flow from ① to ② .
Flow in the opposite direction, from ② to ① ,is blocked by the poppet.

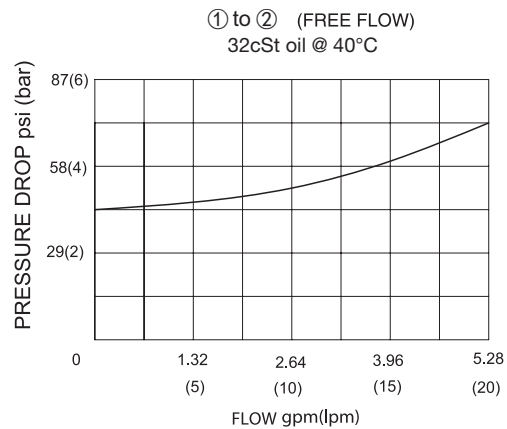
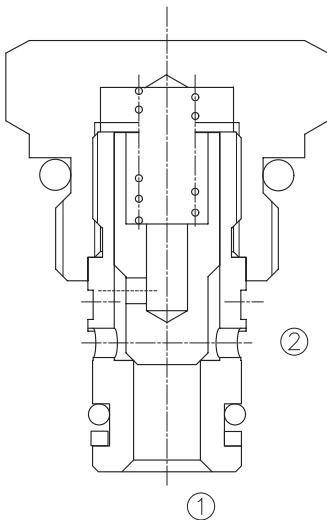
SYMBOL



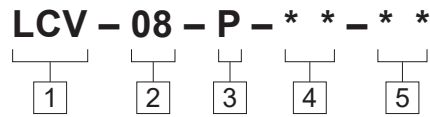
SPECIFICATIONS

Operating Pressure	250bar
Flow	See PRESSURE DROP VS.FLOW graph.
Internal Leakage	2 drops/min max. at 250bar
Cracking Pressure	0.3=0.3bar 0.7=0.7bar 2.1=2.1bar 3.0=3.0bar 4.1=4.1bar 6.9=6.9bar
Temperature	-40°F to +250°F(-40°C to +120°C)
Filtration	See page N-1
Fluids	Mineral-based fluids with viscosities of 7.4 to 420 cSt.
Cavity	08-2,See page M-1
Housing Material	6061-T6 aluminum alloy rated to 207bar, Steel & Ductile iron rated to 350bar

PRESSURE DROP VS.FLOW



TO ORDER



1 Function
LCV=Check Valve

2 Size
08=08 Size

3 Type
P=Poppet

4 Cracking Pressure
0.3=0.3bar
0.7=0.7bar
2.1=2.1bar
3.0=3.0bar
4.1=4.1bar
6.9=6.9bar

5 Port Size
Omit=None
4T=SAE4
6T=SAE6
2G=G 1/4
3G=G 3/8

※See page K-1 for detail of housing
※Other port sizes are available

D

INSTALLATION DIMENSIONS

Unit=Millimeters

