

# LCSAB

In-line Shuttle Valve

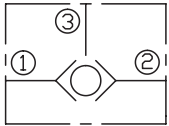
## DESCRIPTION

A cartridge-style ball-type shuttle valve with signal at port ③

## OPERATION

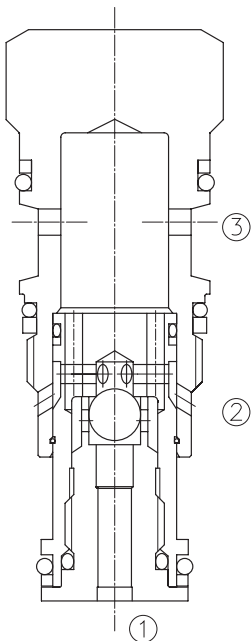
The valve will allow flow from the higher pressure of port ① or ② to the port ③ .

## SYMBOL



## SPECIFICATIONS

Operating Pressure	350bar
Flow	10L/min.
Internal Leakage	5 drops/min max. at 350bar
Temperature	-40°F to +250°F(-40°C to +120°C)
Filtration	See page N-1
Fluids	Mineral-based fluids with viscosities of 7.4 to 420 cSt.
Cavity	SUN T-11A, See page M-6
Housing Material	Steel & Ductile iron rated to 350bar



**TO ORDER**

**LCSA B – X X \***

┌───┐  
1

┌──┐  
2

┌──┐  
3

┌──┐  
4

┌──┐  
5

**1 Function**  
LCSA=Ball Type, Cartridge Shuttle Valve

**3 Control**  
X=Non-adjustable

**5 Seal Kits**  
N=Buna N  
V= Viton

**2 Flow**  
B=10L/min signal at port ③

**4 Pressure Range**  
X=Non-adjustable

※ See page K-17 – K22 for detail of housing  
 ※ Other port sizes are available

**D**

**INSTALLATION DIMENSIONS**

Unit=Millimeters

