

LPSRV2-10

Pilot-operated Relief Valve

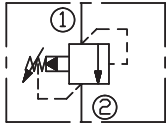
DESCRIPTION

A cartridge-style pilot-operated spool-type relief valve

OPERATION

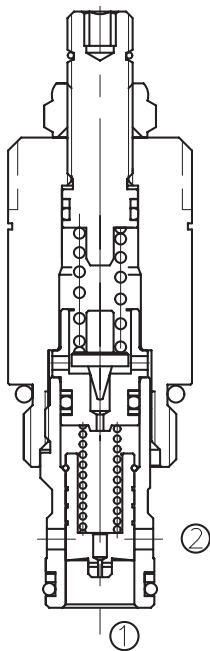
The valve prevents flow from ① to ② until pressure at ① exceeds the set Cracking Pressure and opens the pilot section. The pilot flow creates a pressure differential across the spool which causes the valve to open allowing flow from ① to ② protecting the circuit from over pressurization.

SYMBOL



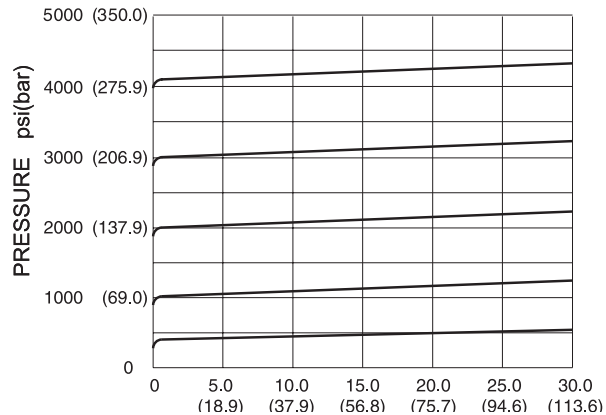
SPECIFICATIONS

Max.Operating Pressure	Port①: 420bar
Max.Pressure Admitted	Port②: 210bar
Flow	See PRESSURE DROP VS. FLOW graph.
Internal Leakage	82 cc/min max. to 80% of nominal setting
Reseat Pressure	85% of cracking pressure (cracking pressure at 0.95 lpm /0.25 gpm)
Standard Spring Ranges	7 to 55 bar; preset: 47 bar 35 to 140 bar; preset: 48 bar 70 to 280 bar; preset: 88 bar 140 to 420 bar; preset:140 bar
Temperature	-40°F to +250°F(-40°C to +120°C)
Filtration	See page N-1
Fluids	Mineral-based fluids with viscosities of 7.4 to 420 cSt.
Cavity	10-2, See page M-2
Housing Material	Steel & Ductile iron rated to 350bar

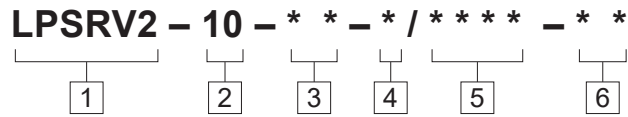


PRESSURE DROP VS.FLOW

32cSt oil @ 40°C



TO ORDER



- | | | |
|--|---|---|
| <p>1 Function
LPSRV2=Pilot-operated
Spool-type Relief Valve</p> | <p>3 Spring Ranges
8=100-800psi(7-55bar)
Preset:680psi(47bar)
20=500-2000psi(35-140bar)
Preset:696psi(48bar)
40=1000-4000psi(70-280bar)
Preset:1275psi(88bar)
60=2000-6000psi(140-420bar)
Preset:2000psi(140bar)</p> | <p>5 Optional Pressure Setting
Omit=Standard Setting
Example:0250=250Bar</p> |
| <p>2 Size
10=10 Size</p> | <p>4 Seal Kits
Omit=O-ring Seals</p> | <p>6 Port Size
Omit=None
6T=SAE6
8T=SAE8
3G=G 3/8
4G=G 1/2</p> |

※See page K-4 for detail of housing
※Other port sizes are available

E

INSTALLATION DIMENSIONS

Unit=Millimeters

