

LPSRV2-08

Pilot-operated Relief Valve

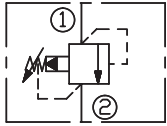
DESCRIPTION

A cartridge-style pilot-operated spool-type relief valve

OPERATION

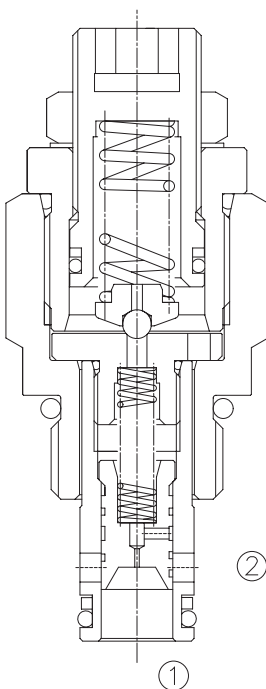
The valve prevents flow from ① to ② until pressure at ① exceeds the set Cracking Pressure and opens the pilot section. The pilot flow creates a pressure differential across the spool which causes the valve to open allowing flow from ① to ② protecting the circuit from over pressurization. This cartridge relief valve offers a smooth transition in response to a load change in a hydraulic circuit.

SYMBOL

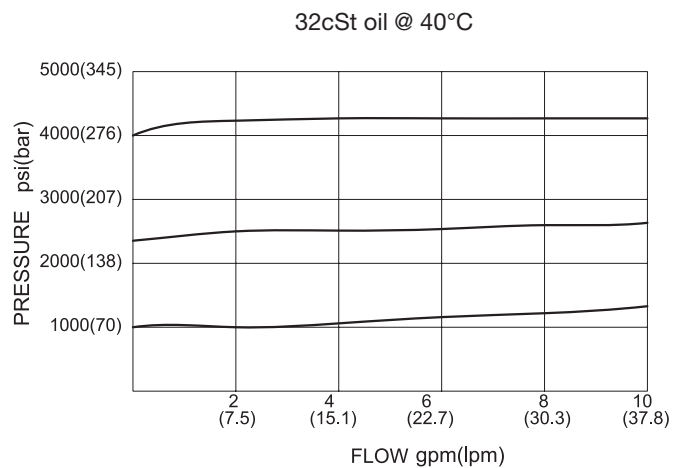


SPECIFICATIONS

Max. Operating Pressure	350bar
Flow	See PRESSURE DROP VS. FLOW graph.
Internal Leakage	82cc/min max. to 90% of nominal setting pressure
Standard Spring Ranges	3.45bar to 103.5bar, preset: 31bar 3.45bar to 207bar, preset: 65.5bar 3.45bar to 350bar, preset: 103bar
Temperature	-40°F to +250°F(-40°C to +120°C)
Filtration	See page N-1
Fluids	Mineral-based fluids with viscosities of 7.4 to 420 cSt.
Cavity	08-2, See page M-1
Housing Material	Steel & Ductile iron rated to 350bar

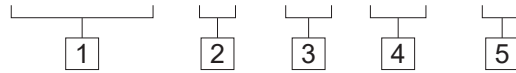


PRESSURE DROP VS. FLOW



TO ORDER

LPSRV2 - 08 - * * / ** - * ***



1 Function
LPSRV2=Pilot-operated
Spool-type Relief Valve

2 Size
08=08 Size

3 Spring Ranges
15=50-1500psi(3.5-103.5bar)
Preset:450psi(31bar)
30=50-3000psi(3.5-207bar)
Preset:950psi(65.5bar)
50=50-5000psi(3.5-350bar)
Preset:1500psi(103bar)

4 Optional Pressure Setting
Omit=Standard Setting
Example:0150=150Bar

5 Port Size
Omit=None
4T=SAE4
6T=SAE6
2G=G 1/4
3G=G 3/8

※ See page K-1 for detail of housing
※ Other port sizes are available



INSTALLATION DIMENSIONS

Unit=Millimeters

