

LPS-10-43

Sequence Valve

DESCRIPTION

A cartridge-style, pilot-operated spool-type sequence valve with external pilot and internal spring chamber drain

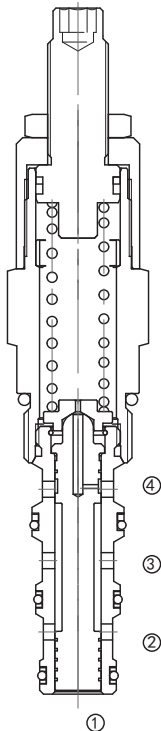
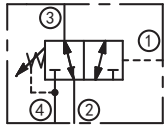
OPERATION

In neutral (unpiloted), the valve allows flow to pass bi-directionally from port ③ to port ②, while blocking at port ④. The spring chamber is constantly drained at port ④.

Upon attainment of a predetermined pressure at port ①, the spool shifts to close port ③ to port ②, while opening port ③ to port ④.

Note: the back-pressure at port ④ will directly add to the spring setting value.

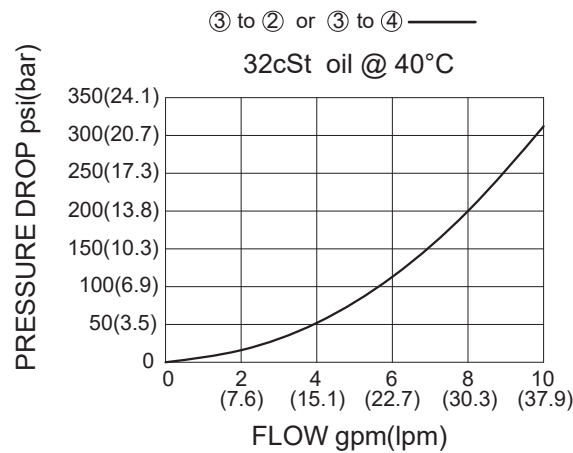
SYMBOL



SPECIFICATIONS

Operating Pressure	ports ①、②、③: 240bar, port ④: 69Bar
Flow	See PRESSURE DROP VS.FLOW graph.
Internal Leakage	82ml/min max. to 85% of nominal setting
Standard Spring Ranges	2.8 to 27.6 bar; preset: 14bar 15.2 to 151.7 bar; preset: 76bar
Temperature	-40°F to +250°F(-40°C to +120°C)
Filtration	See Page N-1
Fluids	Mineral-based fluids with viscosities of 7.4 to 420 cSt.
Cavity	10-4, See page M-2
Housing Material	Steel & Ductile iron rated to 350bar

PRESSURE DROP VS.FLOW



TO ORDER

LPS - 10 - 43 - * * - */ ** - * ***

1
2
3
4
5
6

- | | | |
|---|---|---|
| <p>1 Function
LPS=Pilot-operated Spool-type
Sequence Valve</p> | <p>3 Spring Ranges
4=40-400psi(2.8-27.6bar)
Preset:200psi(14bar)
21=220-2200psi(15.2-151.7bar)
Preset:1100psi(76bar)</p> | <p>5 Optional Pressure setting
Omit=Standard Setting
Example:0120=120bar</p> |
| <p>2 Size
10=10 Size</p> | <p>4 Adjustment
K= 1-1/2" Dia Knob
Omit=1/4" Hex Allen Head</p> | <p>6 Port Size
Omit=None
6T=SAE6
8T=SAE8
2G=G 1/4
3G=G 3/8</p> |

※ See page K-6 for detail of housing
 ※ Other port sizes are available

INSTALLATION DIMENSIONS

Unit=Millimeters

