

# LPS3-10

Pilot-operated Sequence Valve

## DESCRIPTION

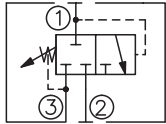
A cartridge-style pilot-operated spool-type sequence valve with internal pilot and spring chamber drain

## OPERATION

In its steady state, the valve blocks flow from ① to ②, with the spring chamber drained at ③. On attainment of a pre-determined pressure at ①, the cartridge shifts to open ① to ②.

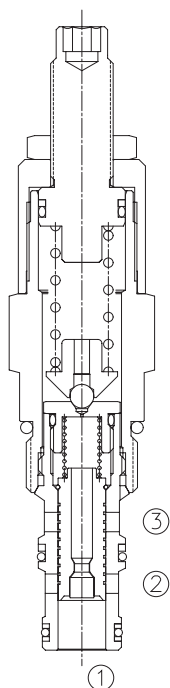
Note that back-pressure on ③ adds to the spring setting value.

## SYMBOL

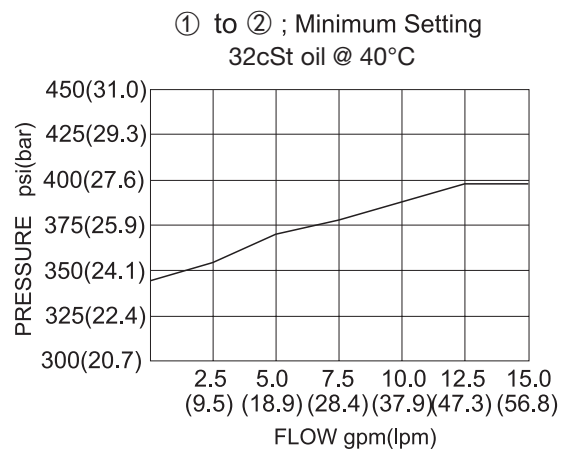


## SPECIFICATIONS

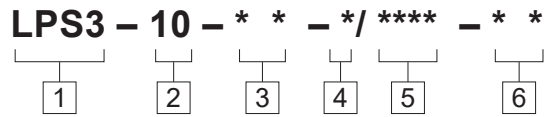
Operating Pressure	350 bar on port ① and ②; 240 bar on port ③
Flow	See PRESSURE DROP VS. FLOW graph.
Internal Leakage	82 cc/min max. to 85% of nominal setting
Standard Spring Ranges	20 to 345 bar; preset: 172 bar
Temperature	-40°F to +250°F (-40°C to +120°C)
Filtration	See page N-1
Fluids	Mineral-based fluids with viscosities of 7.4 to 420 cSt.
Cavity	10-3, See page M-2
Housing Material	Steel & Ductile iron rated to 350 bar



## PRESSURE DROP VS. FLOW



**TO ORDER**



**1 Function**  
LPS3=Spool-type Sequence Valve with External Pilot and Internal Drain

**2 Size**  
10=10 Size

**3 Spring Ranges**  
30=73-3000psi(5-210bar)  
Preset:1520psi(105bar)  
50=300-5000psi(20-345bar)  
Preset:2500psi(172bar)

**4 Adjustment**  
K=1-1/2" Dia Knob  
Omit= 1/4" Hex Allen Head

**5 Optional Pressure setting**  
Omit=Standard Setting  
Example:0120=120bar

**6 Port Size**  
Omit=None  
6T=SAE6  
8T=SAE8  
2G=G 1/4  
3G=G 3/8

※ See page K-5 for detail of housing  
※ Other port sizes are available



**INSTALLATION DIMENSIONS**

Unit=Millimeters

