

# LPS2-10

Sequence Valve

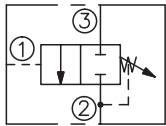
## DESCRIPTION

A cartridge-style spool-type sequence valve with external pilot and internal spring chamber drain

## OPERATION

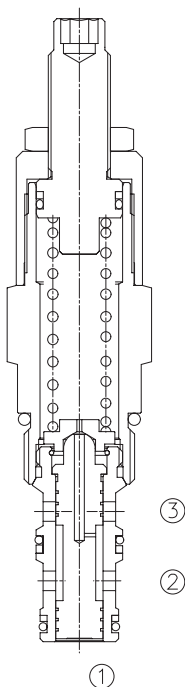
In its steady state, the valve blocks flow from ③ to ② . On attainment of a pre-determined pressure at ①, the cartridge shifts to open ③ to ② . Since the spring chamber is vented at ②, back pressure at ② will directly (1:1) affect the valve's setting.

## SYMBOL

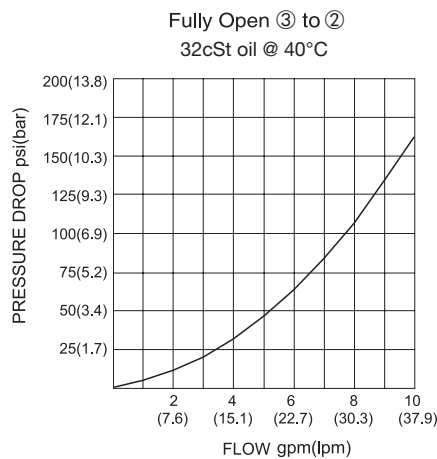


## SPECIFICATIONS

Operating Pressure	207bar
Flow	See PRESSURE DROP VS. FLOW graph.
Internal Leakage	82 cc/min max. to 90% of nominal setting
Standard Spring Ranges	5.5-27.6 bar, preset:13.8bar 13.8-55.2 bar, preset:27.6bar 20.7- 103 bar, preset:51.5bar 28- 145 bar, preset:72.5bar
Temperature	-40°F to +250°F(-40°C to +120°C)
Filtration	See page N-1
Fluids	Mineral-based fluids with viscosities of 7.4 to 420 cSt.
Cavity	10-3, See page M-2
Housing Material	6061-T6 aluminum alloy rated to 207bar, Steel & Ductile iron rated to 350bar



## PRESSURE DROP VS.FLOW



## TO ORDER

**LPS2 - 10 - \* \* - \*/ \*\*\*\* - \* \***  

└──┬──┘
└──┬──┘
└──┬──┘
└──┬──┘
└──┬──┘
└──┬──┘

1
2
3
4
5
6

**1 Function**

LPS2=Spool-type Sequence Valve with External Pilot and Internal Drain

**2 Size**

10=10 Size

**3 Spring Ranges**

4=80-400psi(5.5-27.6bar)  
 Preset:200psi(13.8bar)  
 8=200-800psi(13.8-55.2bar)  
 Preset:400psi(27.6bar)  
 15=300-1500psi(20.7-103bar)  
 Preset:750psi(51.5bar)  
 21=400-2100psi(28-145bar)  
 Preset:1050psi(72.5bar)

**4 Adjustment**

K=1-1/2" Dia Knob  
 Omit=1/4" Hex Allen Head

**5 Optional Pressure setting**

Omit=Standard Setting  
 Example:0120=120Bar

**6 Port Size**

Omit=None  
 6T=SAE6  
 8T=SAE8  
 2G=G 1/4  
 3G=G 3/8

※ See page K-5 for detail of housing

※ Other port sizes are available

E

## INSTALLATION DIMENSIONS

Unit=Millimeters

