

LPPR-10

Pilot-operated Pressure Reducing/
Relieving Valve

DESCRIPTION

A cartridge-style pilot-operated pressure reducing/relieving valve

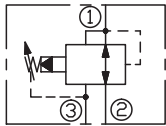
OPERATION

In its steady state, the valve allows flow to pass bi-directionally from ② to ①, with the spring chamber constantly drained at ③. On attainment of a pre-determined pressure at ①, the cartridge shifts to restrict input flow at ②, thereby regulating pressure at ①. In this mode, the valve will also relieve ① to ③.

Dead band (from reducing to relieving) pressure rise over reduced pressure setting:

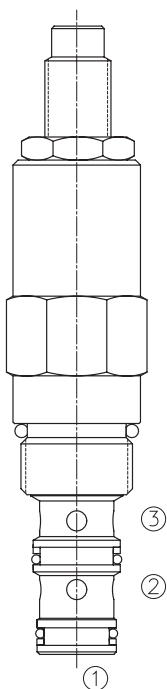
Non-flow condition: approximately 0.55 bar (8 psi); with flow: approximately 2.1 bar (30 psi).

SYMBOL

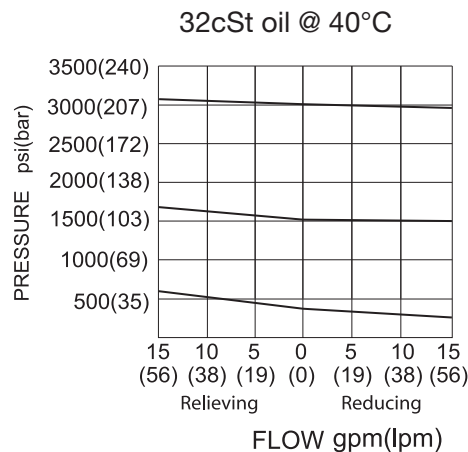


SPECIFICATIONS

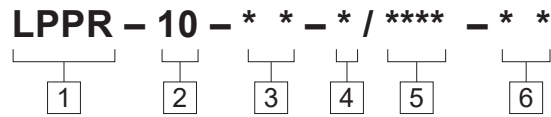
Operating Pressure	207bar
Flow	See performance chart
Standard Spring Ranges	6.9 to 27.6 bar, preset: 13.8bar 10.3 to 103 bar, preset: 56bar 27.6 to 207 bar, preset: 103bar
Temperature	-40°F to +250°F(-40°C to +120°C)
Filtration	See page N-1
Fluids	Mineral-based fluids with viscosities of 7.4 to 420 cSt.
Cavity	10-3, See page M-2
Housing Material	6061-T6 aluminum alloy rated to 207bar, Steel & Ductile iron rated to 350bar



PRESSURE DROP VS.FLOW



TO ORDER



1 Function
LPPR=Pilot-operated Pressure Reducing/Relieving Valve

2 Size
10=10 Size

3 Spring Ranges
4=100-400psi(6.9-27.6bar)
Preset:200psi(13.8bar)
15=150-1500psi(10.3-103bar)
Preset:800psi(56bar)
30=400-3000psi(27.6-207bar)
Preset:1500psi(103bar)

4 Adjustment
K=1-1/2" Dia Knob
Omit = 1/4" Hex Allen Head

5 Optional Pressure Setting
Omit=Standard Setting
Example:0100=100Bar

6 Port Size
Omit=None
6T=SAE6
8T=SAE8
2G=G 1/4
3G=G 3/8

※ See page K-5 for detail of housing
※ Other port sizes are available

INSTALLATION DIMENSIONS

Unit=Millimeters

