

LPPR2-10

Pilot-operated Pressure Reducing Valve

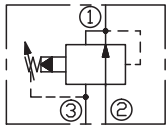
DESCRIPTION

A cartridge-style pilot-operated pressure reducing valve

OPERATION

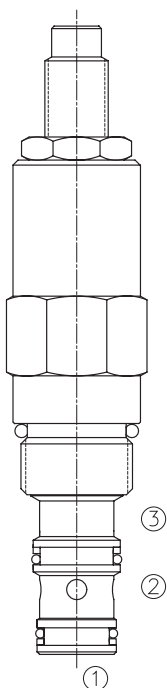
In its steady state, the valve allows flow to pass from ② to ①, with the spring chamber constantly drained at ③. On attachment of a pre-determined pressure at ①, the cartridge shifts to restrict input flow at ②, thereby regulating pressure at ①.

SYMBOL

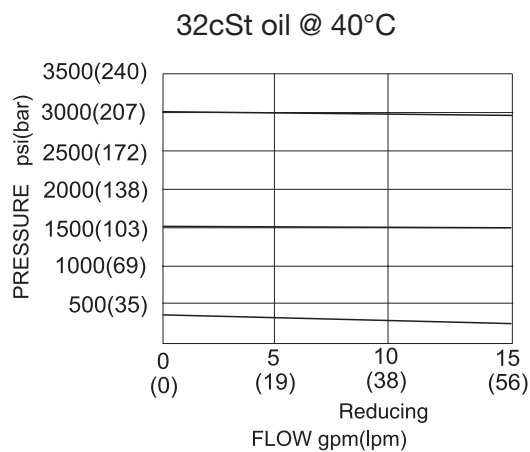


SPECIFICATIONS

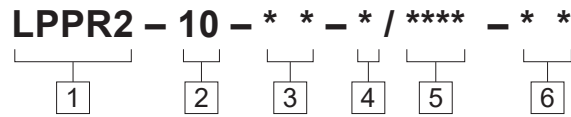
Operating Pressure	207bar
Flow	See PRESSURE DROP VS. FLOW graph.
Internal Leakage	from ② to ③ 82 cc/min max. at 85% of Cracking Pressure
Standard Spring Ranges	6.9-27.6 bar, preset: 13.5bar 10.3- 103 bar, preset: 51bar 27.6- 207 bar, preset: 103bar
Temperature	-40°F to +250°F (-40°C to +120°C)
Filtration	See page N-1
Fluids	Mineral-based fluids with viscosities of 7.4 to 420 cSt.
Cavity	10-3, See page M-2
Housing Material	6061-T6 aluminum alloy rated to 207bar, Steel & Ductile iron rated to 350bar



PRESSURE DROP VS.FLOW



TO ORDER



1 Function
LPPR2=Pilot-operated
Pressure Reducing Valve

2 Size
10=10 Size

3 Spring Ranges
4=100-400psi(6.9-27.6bar)
Preset:196psi(13.5bar)
15=150-1500psi(10.3-103bar)
Preset:740psi(51bar)
30=400-3000psi(27.6-207bar)
Preset:1490psi(103bar)

4 Adjustment
K= 1-1/2" Dia Knob
Omit = 1/4" Hex Allen Head

5 Optional Pressure setting
Omit=Standard Setting
Example:0100=100bar

6 Port Size
Omit=None
6T=SAE6
8T=SAE8
2G=G 1/4
3G=G 3/8

※ See page K-5 for detail of housing
※ Other port sizes are available

E

INSTALLATION DIMENSIONS

Unit=Millimeters

