

LPOSRV2KPHK-M28

Pilot-operated Pressure Limitation
And Feed Valve With Hydraulic
Pressure Sequencing Stage

DESCRIPTION

A pilot-operated, pressure limitation and feed valve with external drain port and hydraulic pressure sequencing stage

OPERATION

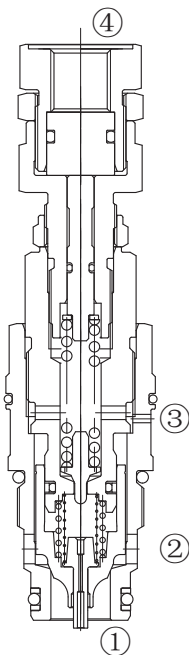
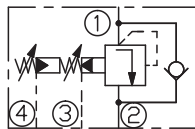
The valve prevents flow from ① to ② until pressure at ① exceeds the set Cracking Pressure and opens the pilot section. The pilot flow creates a pressure differential across the poppet which causes the valve to open allowing flow from ① to ② protecting the circuit from over pressurization.

If the pressure at ② is at least 2 bar higher than Pressure at ① . The main poppet will be lifted out of its seat, to allow flow from ② to ① , this feed function is used to make up for lacking hydraulic fluid volumes.

Pressure at port ③ is directly additive to the valve setting at a 1:1 ratio and should not exceed 50bar.

By connecting pilot oil pressure to the external port ④ , the control piston is pressurized. This increases the preload of the main spring and the maximum set system pressure.

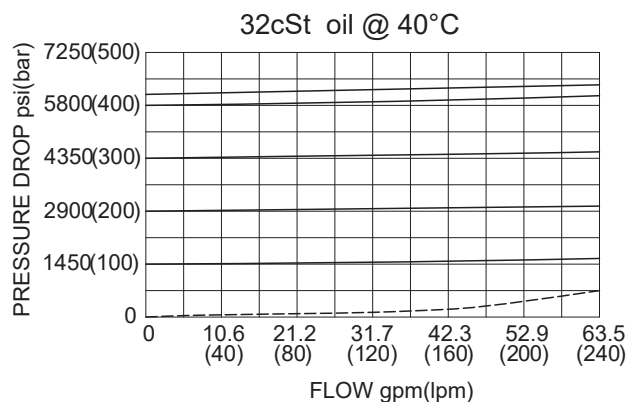
SYMBOL



SPECIFICATIONS

Max.Operating Pressure	420bar
Flow	200 L/min
Internal Leakage	10 drops/min max. to 80% of nominal setting
Temperature	-40°F to +250°F(-40°C to +120°C)
Filtration	See Page N-1
Fluids	Mineral-based fluids with viscosities of 7.4 to 420 cSt.
Cavity	Rexroth-HC, See page M-27
Housing Material	Steel & Ductile iron rated to 350bar

PRESSURE DROP VS.FLOW



TO ORDER

LPOSRV2 K PHK - M28 - * * / **** / **** - * *



※Other port sizes are available

INSTALLATION DIMENSIONS

Unit=Millimeters

