

LACRV2-16

Pilot-operated Relief Valve With Reverse Free Flow Check

DESCRIPTION

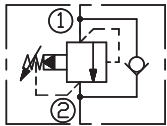
A cartridge-style pilot-operated poppet -type relief valve with reverse free flow check

OPERATION

The valve prevents flow from ① to ② until pressure at ① exceeds the set Cracking Pressure and opens the pilot section. The pilot flow creates a pressure differential across the poppet which causes the valve to open allowing flow from ① to ② protecting the circuit from over pressurization.

Pressure at ② overcomes the spring-bias pressure 2 ~ 3bar and allows free flow from ② to ① .

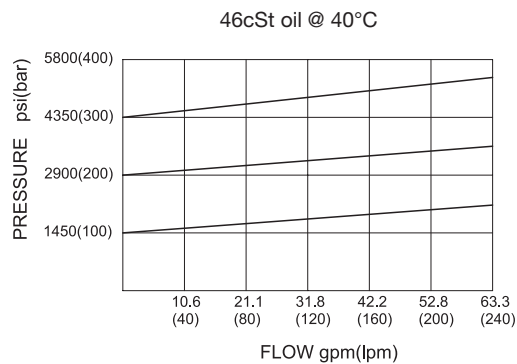
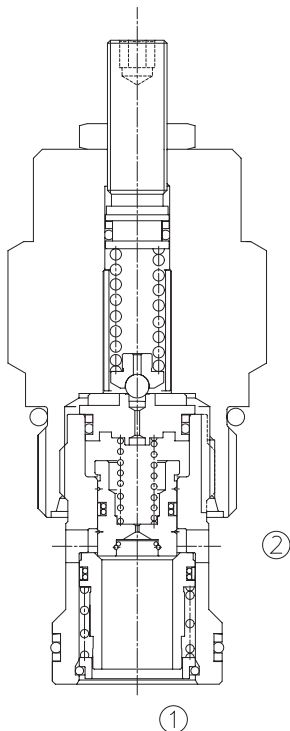
SYMBOL



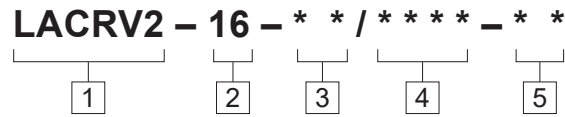
SPECIFICATIONS

Max.Operating Pressure	350bar
Flow	See PRESSURE VS. FLOW graph.
Internal Leakage	10 drops/min max. to 80% of nominal setting
Temperature	-40°F to +250°F(-40°C to +120°C)
Filtration	See page N-1
Fluids	Mineral-based fluids with viscosities of 7.4 to 420 cSt.
Cavity	16-2, See page M-3
Housing Material	Steel & Ductile iron rated to 350bar

PRESSURE DROP VS.FLOW



TO ORDER



1 Function
LACRV2=Adjustable Pilot-operated
Cartridge Relief Valve

2 Size
16=16 Size

3 Spring Ranges
30=145-3000psi(10-210bar)
Preset:1450psi(100bar)
60=145-6000psi(10-420bar)
Preset:2900psi(200bar)

4 Optional Pressure Setting
Omit=Standard Setting
Example:0250=250bar

5 Port Size
Omit=None
12T=SAE 12
16T=SAE 16
6G=G 3/4
8G=G 1

※ See page K-9 for detail of housing
※ Other port sizes are available

INSTALLATION DIMENSIONS

Unit=Millimeters

