

LACR.M24

Direct-acting Anti-cavitation
Relief Valve

DESCRIPTION

A cartridge-style direct-acting
poppet-type anti-cavitation relief
valve



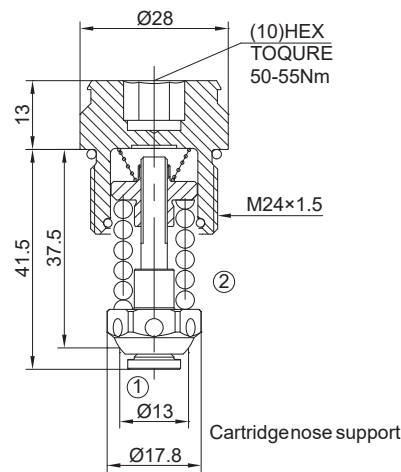
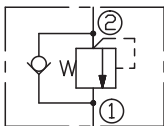
OPERATION

Flow is free from ① to ② until pressure increases to meet the selected valve setting, allowing relief flow through port ① to tank. This valve combines the typical function of shock relief valve (direct acting) and anticavitation function through the check valve. The direct action and the specific design allow a very fast opening and closing.

Note: to obtain a good leak proof performances coin the cavity seat using a loose valve seat as a coning tool.

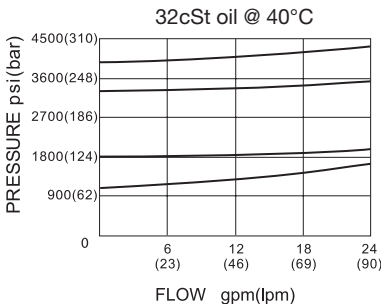
Torque to be applied :6.5 ± 2 Nm.

SYMBOL

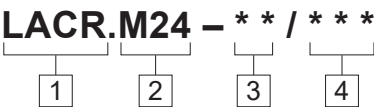


SPECIFICATIONS

Max.Operating Pressure	400bar
Standard Spring Ranges	90 to 140 bar; 140 to 270bar; 270 to 350bar; 350 to 400bar;
Max. Flow	90 l/min.
Temperature	-40°F to +250°F(-40°C to +120°C)
Filtration	See page N-1
Fluids	Mineral-based fluids with viscosities of 7.4 to 420 cSt.
Cavity	Rexroth-870, See page M-13
Housing Material	Steel & Ductile iron rated to 350bar



TO ORDER



- 1

Function
LACR=Anti-Cavitation Relief Valve
- 2

Size
M24=M24 Size

- 3

Spring Ranges
10=1300-2000psi(90-140bar)
20=2000-3900psi(140-270bar)
35=3900-5000psi(270-350bar)
40=5000-5800psi(350-400bar)

- 4

Optional Pressure Seeting
Omit=Standard Setting
Example:070=70bar
Factory pressure setting established at 10L/min;

E