

LACR.M14

Direct-acting Anti-cavitation Relief Valve

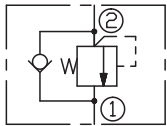
DESCRIPTION

A cartridge-style direct-acting poppet-type anti-cavitation relief valve

OPERATION

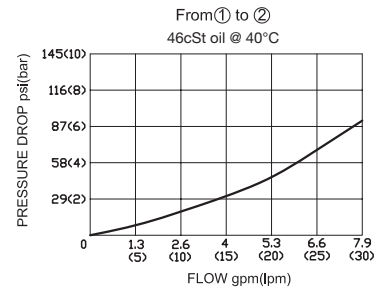
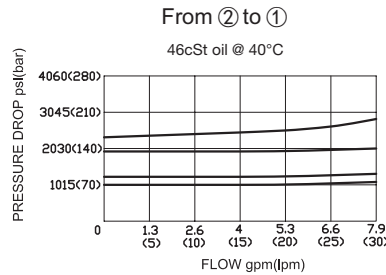
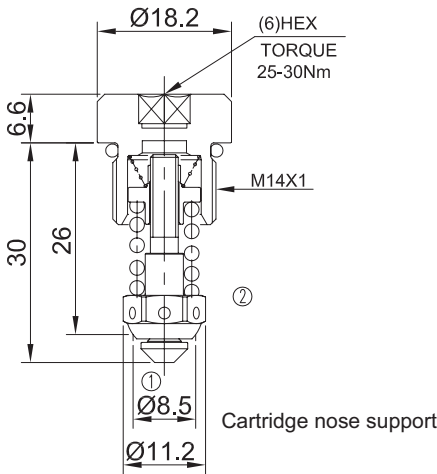
Flow is free from ① to ② .until ② pressure increases to meet the selected valve setting, allowing relief flow through port ① to tank. This valve combines the typical function of shock relief valve (direct acting) and anti-cavitation function through the check valve. The direct action and the specific design allow a very fast opening and closing.

SYMBOL



SPECIFICATIONS

Operating Pressure	210bar
Flow	See PRESSURE DROP VS.FLOW graph.
Maximum valve leakage at reseal	15 drops/min
Standard Spring Ranges	20-70bar; 70-100bar; 100-210bar;
Temperature	-40°F to +250°F(-40°C to +120°C)
Filtration	See page N-1
Fluids	Mineral-based fluids with viscosities of 7.4 to 420 cSt.
Cavity	Rexroth-869, See page M-12
Housing Material	6061-T6 aluminum alloy rated to 207bar, Steel & Ductile iron rated to 350bar



TO ORDER

LACR.M14 – ** / ***

1 2 3 4

1 Function
LACR=Anti-Cavitation Relief Valve

2 Size
M14=M14 Size

3 Spring Ranges
05=290 -1000psi(20-70 bar)
10=1000-1450psi(70-100bar)
20=1450-3000psi(100-210bar)

4 Optional Pressure Setting
Omit=Standard Setting
Example:070=70bar
Factory pressure setting established at 5L/min