

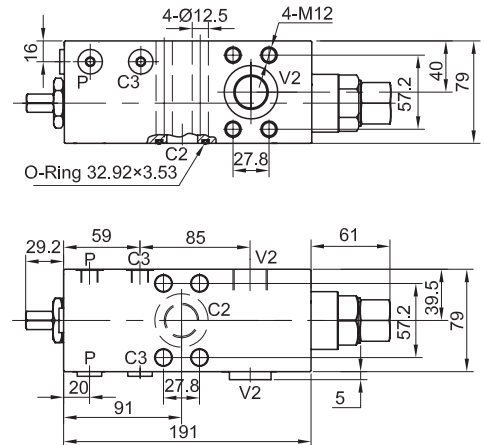
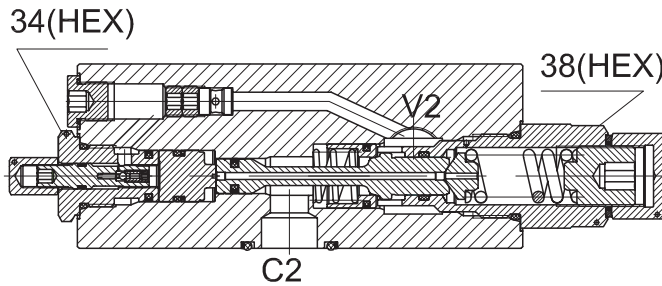
SCB-MMB-SE42-FA-73



Single Counterbalance Manifolds

DESCRIPTION

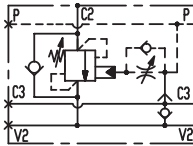
Single counterbalance manifolds with brake release port for winches flangeable



OPERATION

When pressure at V2 rises above the spring bias pressure, the check seat is pushed away from the piston and flow is allowed from V2 to C2. When load pressure at C2 rises above the pressure setting, the direct operated, differential area, relief function is activated and flow is relieved from C2 to V2. With pilot pressure at P, the pressure setting is reduced in proportion to the stated ratio of the valve, until opening and allowing flow from C2 to V2. The spring chamber is drained to V2, and any back-pressure at V2 is additive to the pressure setting in all functions. Through port C3, an incorporated shuttle valve directs either P or V2 line pressure to the spring actuated brake for brake opening.

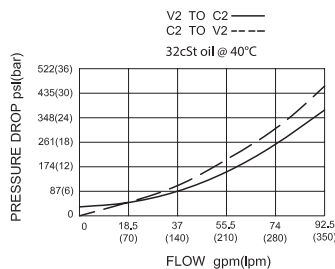
SYMBOL



SPECIFICATIONS

Max. Operating Pressure	350bar
Flow	See PRESSURE DROP VS.FLOW graph.
Pilot Ratio	13: 1
Internal Leakage	5 drops/min. at nominal pressure
Temperature	-40°F to +250°F (-40°C to +120°C)
Filtration	See page N-1
Fluids	Mineral-based fluids with viscosities of 7.4 to 420 cSt.
Housing Material	Steel & Ductile iron rated to 350bar

PRESSURE DROP VS.FLOW



TO ORDER

SCB – MMB – SE42 – FA – 73 – 13 – 35



1 Function SCB=Single Counterbalance Manifolds	4 Connection Porting V2-C2=1 SAE6000 C3-P=G 1/4	6 Spring Range 35=3625-7250psi(250-500bar) Preset:3000psi(210bar) 102bar/Turn Factory pressure setting established at 5l/min.
2 Mounting Type	5 Pilot Ratio 13=13:1	
3 Size		