

SCB-LMB-SE30G-3G

Single Counterbalance Manifolds



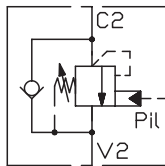
DESCRIPTION

Single counterbalance manifolds

OPERATION

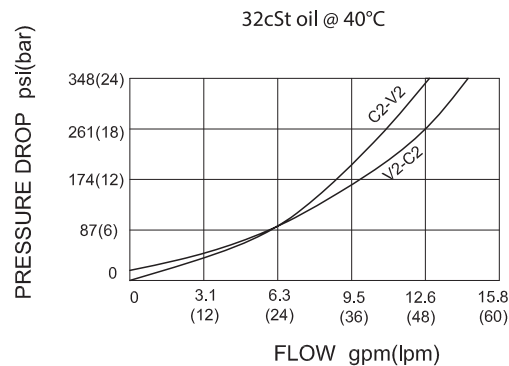
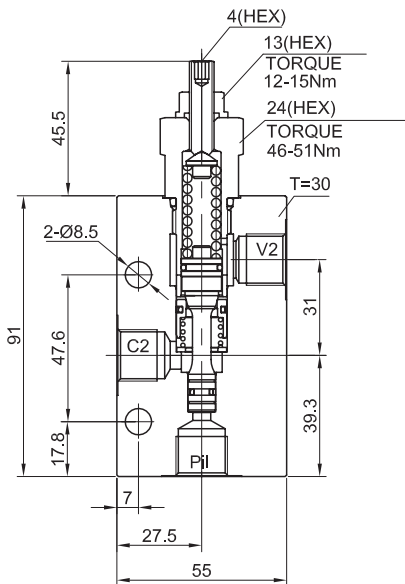
When pressure at V2 rises above the spring bias pressure, the check seat is pushed away from the piston and flow is allowed from V2 to C2 . When load pressure at C2 rises above the pressure setting, the direct-acting, differential area relief function is activated and flow is relieved from C2 to V2 . With pilot pressure at Pil , the pressure setting is reduced in proportion to the stated ratio of the valve, until fully open with free-flow from C2 to V2 . The spring chamber is drained to V2 , and any back-pressure at V2 is additive to the pressure setting in all functions.

SYMBOL



SPECIFICATIONS

Max.Operating Pressure	350bar
Flow	See PRESSURE DROP VS.FLOW graph.
Pilot Ratio	4.2: 1
Internal Leakage	5 drops/min. at nominal pressure
Temperature	-40°F to +250°F(-40°C to +120°C)
Filtration	See page N-1
Fluids	Mineral-based fluids with viscosities of 7.4 to 420 cSt.
Housing Material	Steel & Ductile iron rated to 350bar



TO ORDER

SCB – LMB – SE30G – 3G – **



- 1 Function**
SCB=Single Counterbalance Manifolds
- 2 Connection Type**
- 3 Size**
- 4 Pilot Ratio**
G=4.2:1

- 5 Port Size**
3G=G 3/8
※Other port sizes are available

- 6 Spring Ranges**
35=1450-5000psi(100-350bar)
Preset:5000psi(350bar) 130bar/Turn
21=870-3000psi(60-210bar)
Preset:3000psi(210bar) 65bar/Turn
Factory pressure setting established at 5l/min.