

MHDR10K-M35-60

Direct-acting Relief Valve

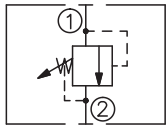
DESCRIPTION

A cartridge-style direct-acting poppet-type relief valve

OPERATION

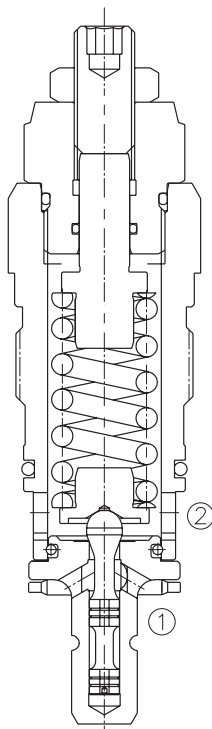
Flow is blocked from ① to ② until pressure increases to meet the selected valve setting, lifting the poppet from its seat and allowing relief flow through ② to tank. Pressure at ② is additive to the relief setting of the valve. The unique poppet design provides enhanced stability at all flows and pressures.

SYMBOL

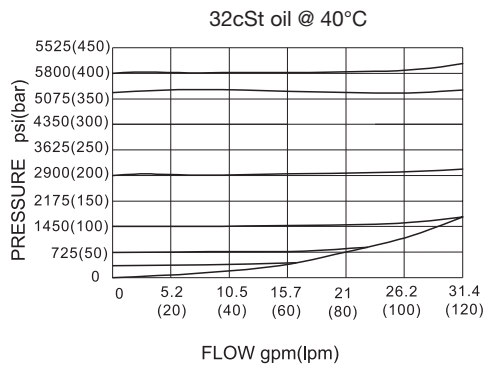


SPECIFICATIONS

Operating Pressure	400bar
Flow	See PRESSURE DROP VS. FLOW graph.
Internal Leakage	5 drops/min max. to 80% of nominal setting
Reseat Pressure	80% of cracking pressure (cracking pressure at 0.95 lpm /0.25 gpm)
Standard Spring Ranges	25 to 400 bar; preset 200 bar
Temperature	-40°F to +250°F(-40°C to +120°C)
Filtration	See page N-1
Fluids	Mineral-based fluids with viscosities of 7.4 to 420 cSt.
Cavity	Rexroth - DBD -10K, See page M-12
Housing Material	Steel & Ductile iron rated to 350bar



PRESSURE DROP VS.FLOW



TO ORDER

MHDR 10K – M35 – 60 / * * * * – * *



1 Function
MHDR=Direct-acting Relief Valve

2 Size
10K-M35=10K-M35 Size

3 Spring Ranges
60=360-6000psi(25-400bar)
Preset:2900psi(200bar)

4 Optional Pressure Setting
Omit=Standard Setting
Example:0250=250bar

5 Port Size
Omit=None
8T=SAE 8
10T=SAE 10
4G=G 1/2
6G=G 3/4

※Other port sizes are available

INSTALLATION DIMENSIONS

Unit=Millimeters

