

MHDR4K-M14

Direct-acting Relief Valve

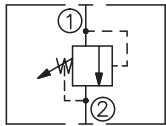
DESCRIPTION

A cartridge-style direct-acting poppet-type relief valve

OPERATION

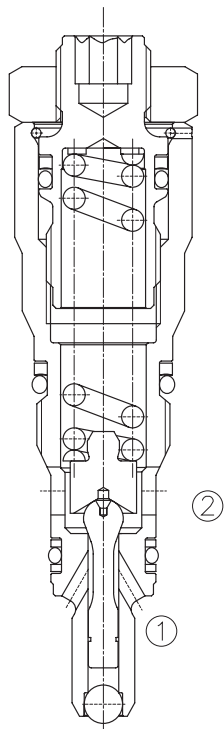
The valve prevents flow from ① to ② until the set Cracking Pressure at ① is achieved. The poppet then unseats allowing flow from ① to ② protecting the circuit from over pressurization.

SYMBOL

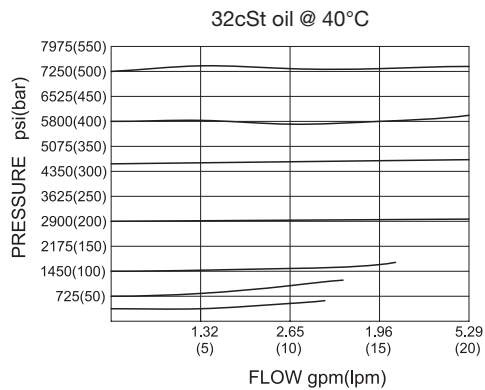


SPECIFICATIONS

Operating Pressure	500bar
Flow	See PRESSURE DROP VS. FLOW graph.
Internal Leakage	5 drops/min max. to 80% of nominal setting
Reseat Pressure	80% of cracking pressure (cracking pressure at 0.95 lpm /0.25 gpm)
Standard Spring Ranges	25 to 500 bar; preset: 200 bar
Temperature	-40°F to +250°F(-40°C to +120°C)
Filtration	See page N-1
Fluids	Mineral-based fluids with viscosities of 7.4 to 420 cSt.
Cavity	Rexroth R/DBD.4K, See page M-14
Housing Material	Steel & Ductile iron rated to 350bar



PRESSURE DROP VS.FLOW



TO ORDER

MHDR 4K – M14 – ** / * * * * – * *



1 Function
MHDR=Direct-acting Relief Valve

2 Size
4K-M14=4K-M14Size

3 Spring Ranges
70=360-7250psi(25-500bar)
Preset:2900psi(200bar)

4 Optional Pressure Setting
Omit=Standard Setting
Example:0250=250bar

5 Port Size
Omit=None
4T=SAE 4
6T=SAE 6

※Other port sizes are available

INSTALLATION DIMENSIONS

Unit=Millimeters

