

LRVEA

Ventable Pilot-operated Relief Valve

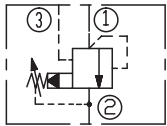
DESCRIPTION

A cartridge-style ventable, pilot operated, balanced piston relief valve

OPERATION

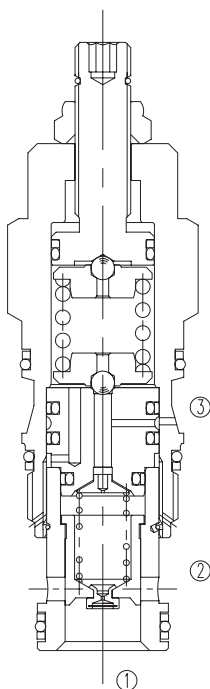
The valve is normally closed pressure regulating valves. When the pressure at the inlet (port ①) reaches the valve setting, the valve starts to open to tank (port ②), throttling flow to regulate the pressure. They provide a vent port (port ③) that connects between the main piston and pilot stage to provide for remote control by other pilot or 2-way valves. These valves are accurate, have low pressure rise vs. flow, they are smooth and quiet, and are moderately fast.

SYMBOL

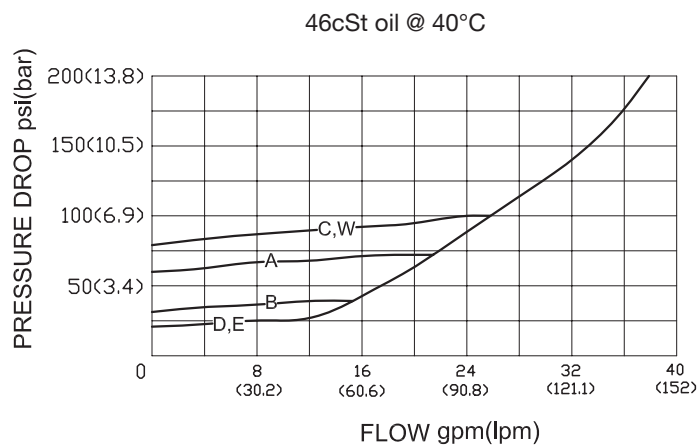


SPECIFICATIONS

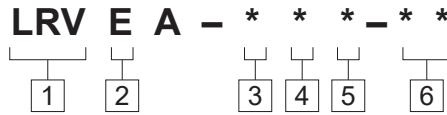
Operating Pressure	350bar
Capacity	See PRESSURE DROP VS.FLOW graph
Internal Leakage	50 cc/min Max. at 70bar.
Standard Spring Ranges	A 7-210 bar; Preset:70bar W 10.5-315 bar; Preset:70bar B 3.5-105 bar; Preset:70bar C 10.5-420 bar; Preset:70bar D 1.7- 55 bar; Preset:28bar E 1.7- 28 bar; Preset:14bar
Temperature	-40°F to +250°F(-40°C to +120°C)
Filtration	See page N-1
Fluids	Mineral-based fluids with viscosities of 7.4 to 420 cSt.
Cavity	SUN T-2A, See page M-6
Housing Material	Steel & Ductile iron rated to 350bar



PRESSURE DROP VS.FLOW



TO ORDER



<p>1 Function LRV=Ventable Fast-acting, Pilot Operated Balanced Piston Relief Valve</p>	<p>4 Spring Ranges A=100-3000psi(7-210bar) Preset:1000psi(70bar) W=150-4500psi(10.5-315bar) Preset:1000psi(70bar) B=50-1500psi(3.5-105bar) Preset:1000psi(70bar) C=150-6000psi(10.5-420bar) Preset:1000psi(70bar) D=25-800psi(1.7-55bar) Preset:400psi(28bar) E=25-400psi(1.7-28bar) Preset:200psi(14bar) Factory Pressure setting established at 15L/min;</p>	<p>6 Port Size Omit=None 8T=SAE8 10T=SAE10 3G=G 3/8 4G=G 1/2</p>
<p>2 Capacity E=120L/min</p>	<p>5 Seal Kits N=Buna N V= Viton</p>	<p>※ See page K-23—K-24 for detail of housing ※ Other port sizes are available</p>
<p>3 Control L= Standard Screw Adjustment</p>		

E

INSTALLATION DIMENSIONS

Unit=Millimeters

