

LRV-08

Direct-acting Relief Valve

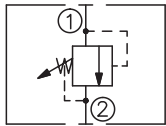
DESCRIPTION

A cartridge-style direct-acting poppet-type relief valve

OPERATION

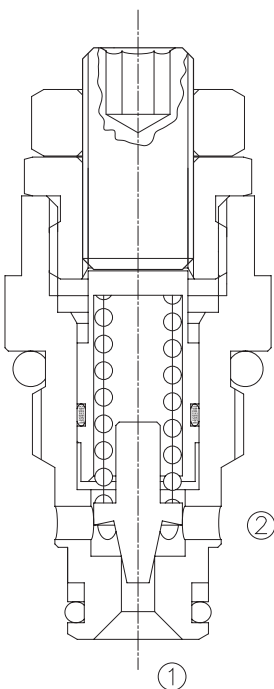
The valve prevents flow from ① to ② until the set Cracking Pressure at ① is achieved. The poppet then unseats allowing flow from ① to ② protecting the circuit from over pressurization.

SYMBOL

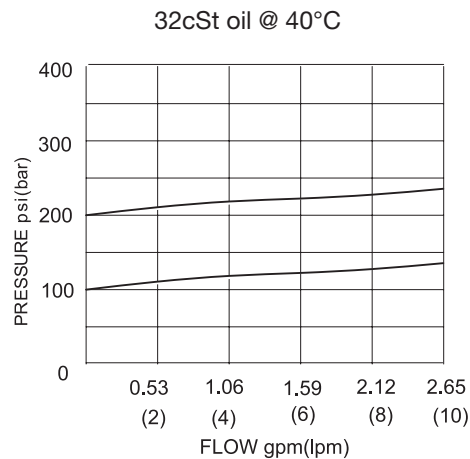


SPECIFICATIONS

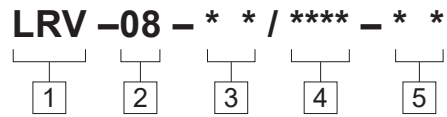
Operating Pressure	250bar
Flow	See PRESSURE DROP VS. FLOW graph.
Internal Leakage	5 drops/min max. to 80% of nominal setting
Reseat Pressure	80% of cracking pressure (cracking pressure at 0.95 lpm /0.25 gpm)
Standard Spring Ranges	40 to 250 bar;
Temperature	-40°F to +250°F(-40°C to +120°C)
Filtration	See page N-1
Fluids	Mineral-based fluids with viscosities of 7.4 to 420 cSt.
Cavity	08-2, See page M-1
Housing Material	6061-T6 aluminum alloy rated to 207bar, Steel & Ductile iron rated to 350bar



PRESSURE DROP VS.FLOW



TO ORDER



1 Function
LRV=Direct-acting Relief Valve

2 Size
08=08 Size

3 Spring Ranges
23=580-2300psi(40-160bar)
Preset:1600psi(110bar)
36=1150-3600psi(80-250bar)
Preset:2300psi(160bar)

4 Optional Pressure Setting
Omit=Standard Setting
EXAMPLE:0160=160bar

5 Port Size
Omit=None
4T=SAE4
6T=SAE6
2G=G 1/4
3G=G 3/8

※ See page K-1 for detail of housing
※ Other port sizes are available

E

INSTALLATION DIMENSIONS

Unit=Millimeters

