

LRSHC

Pilot-operated Sequence Valve

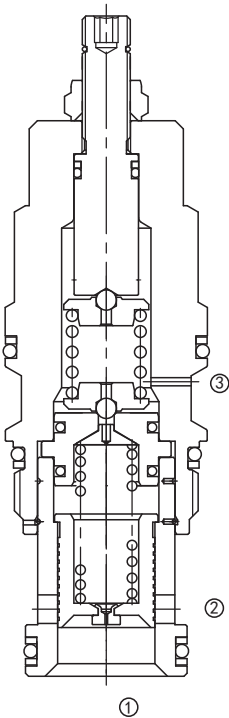
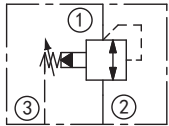
DESCRIPTION

A cartridge-style pilot operated, spool-type sequence valve with internal pilot and spring chamber drain.

OPERATION

The valves will supply a secondary circuit with flow once the pressure at the inlet (port ①) has exceeded the valve setting. The pressure setting of a sequence valve controls the pressure at inlet (port ①) relative to the pressure at the drain (port ③). These valves are insensitive to back pressure at port ② , up to the valve setting. They may be used to regulate pressure in place of 2-port relief valves if there is pressure in the return line.

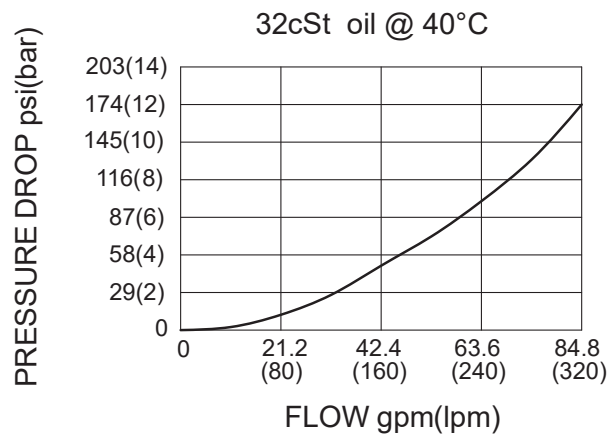
SYMBOL



SPECIFICATIONS

Operating Pressure	350bar														
Capacity	See PRESSURE DROP VS.FLOW graph														
Internal Leakage	65 cc/min Max. at 70bar														
Standard Spring Ranges	<table border="0"> <tr> <td>A</td> <td>7-210bar; Preset 70bar</td> </tr> <tr> <td>W</td> <td>10.5-315bar; Preset 70bar</td> </tr> <tr> <td>B</td> <td>3.5-105bar; Preset 70bar</td> </tr> <tr> <td>C</td> <td>10.5-420bar; Preset 70bar</td> </tr> <tr> <td>D</td> <td>1.7-55bar; Preset 28bar</td> </tr> <tr> <td>E</td> <td>1.7-28bar; Preset 14bar</td> </tr> <tr> <td>N</td> <td>4-55bar; Preset 28bar</td> </tr> </table>	A	7-210bar; Preset 70bar	W	10.5-315bar; Preset 70bar	B	3.5-105bar; Preset 70bar	C	10.5-420bar; Preset 70bar	D	1.7-55bar; Preset 28bar	E	1.7-28bar; Preset 14bar	N	4-55bar; Preset 28bar
A	7-210bar; Preset 70bar														
W	10.5-315bar; Preset 70bar														
B	3.5-105bar; Preset 70bar														
C	10.5-420bar; Preset 70bar														
D	1.7-55bar; Preset 28bar														
E	1.7-28bar; Preset 14bar														
N	4-55bar; Preset 28bar														
Temperature	-40°F to +250°F(-40°C to +120°C)														
Filtration	See Page N-1														
Fluids	Mineral-based fluids with viscosities of 7.4 to 420 cSt.														
Cavity	SUN T-17A, See page M-7														
Housing Material	Steel & Ductile iron rated to 350bar														

PRESSURE DROP VS.FLOW



TO ORDER

LRS H C - * * * - * *

1
2
3
4
5
6

1 Function

LRS=Pilot Operated, Spool-type
Sequence Valve

2 Capacity

D=240L/min

3 Control

L=Standard Screw Adjustment

4 Spring Ranges

A=100-3000psi(7-210bar)	Preset:1000psi(70bar)
W=150-4500psi(10.5-315bar)	Preset:1000psi(70bar)
B=50-1500psi(3.5-105bar)	Preset:1000psi(70bar)
C=150-6000psi(10.5-420bar)	Preset:1000psi(70bar)
D=25-800psi(1.7-55bar)	Preset:400psi(28bar)
E=25-400psi(1.7-28bar)	Preset:200psi(14bar)
N=60-800psi(4-55bar)	Preset:400psi(28bar)

Factory Pressure setting established at 15L/min;

5 Seal Kits

N=Buna N
V=Viton

6 Port Size

Omit=None
12T=SAE 12
16T=SAE 16
6G=G 3/4
8G=G 1

※ See page K-25 for detail of housing
※ Other port sizes are available

E

INSTALLATION DIMENSIONS

Unit=Millimeters

