

LRQEB

Kick-down Pilot-operated Relief Valve

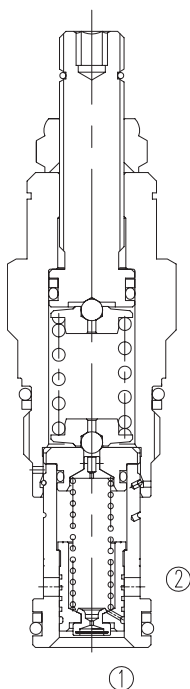
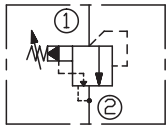
DESCRIPTION

A cartridge-style kick-down pilot-operated balanced piston relief valve.

OPERATION

Kick-down relief cartridges act similar to a circuit breaker in an electrical system. The valves will kick completely open and remain open once the pressure at the inlet (port ①) exceeds the valve setting, creating an unrestricted flow path from port ① to tank (port ②). The valve remains open as long as the pressure at port ① exceeds the pressure at port ②. To reset the valve, pressure at port ① must fall below the setting of the valve, flow from ① to ② must cease; pressure at port ② must be equal to or greater than the pressure at port ①.

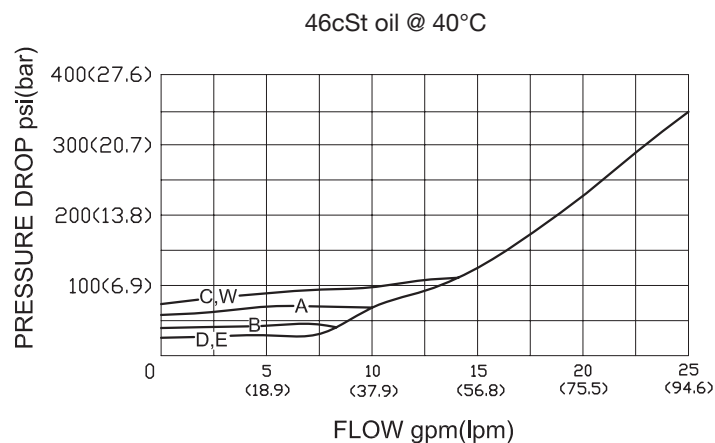
SYMBOL



SPECIFICATIONS

Operating Pressure	350bar
Capacity	See PRESSURE DROP VS.FLOW graph
Internal Leakage	30 cc/min max. at 70bar.
Standard Spring Ranges	A 7-210bar; Preset:70bar B 3.5-105bar; Preset:70bar C 10.5-420bar; Preset:70bar D 1.7- 55bar; Preset:28bar E 1.7- 28bar; Preset:14bar W 10.5- 315bar; Preset:70bar
Temperature	-40°F to +250°F(-40°C to +120°C)
Filtration	See page N-1
Fluids	Mineral-based fluids with viscosities of 7.4 to 420 cSt.
Cavity	SUN T-10A, See page M-7
Housing Material	Steel & Ductile iron rated to 350bar

PRESSURE DROP VS.FLOW



TO ORDER

LRQ E B - * * * - * *

1
2
3
4
5
6

1 Function

LRQ=Kick-down, Pilot
Operated Balanced Piston
Relief Valve

2 Capacity

E=95L/min

3 Control

L= Standard Screw
Adjustment

4 Spring Ranges

A=100-3000psi(7-210bar)	Preset:1000psi(70bar)
B=50-1500psi(3.5-105bar)	Preset:1000psi(70bar)
C=150-6000psi(10.5-420bar)	Preset:1000psi(70bar)
D=25-800psi(1.7-55bar)	Preset:400psi(28bar)
E=25-400psi(1.7-28bar)	Preset:200psi(14bar)
W=150-4500psi(10.5-315bar)	Preset:1000psi(70bar)

Factory Pressure setting established at 15L/min;

5 Seal Kits

N=Buna N
V= Viton

6 Port Size

Omit=None
6T=SAE6
8T=SAE8
2G=G 1/4
3G=G 3/8

※ See page K-13 for detail of housing.
※ Other port sizes are available.

E

INSTALLATION DIMENSIONS

Unit=Millimeters

