

LCVR-08-P

Check Valve

DESCRIPTION

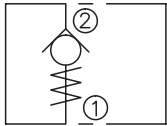
A cartridge-style poppet-type check valve

OPERATION

When pressure at ② rises above the spring bias pressure, the poppet is pushed from its seat and flow allowed from ② to ① .

The valve is closed (checked) from ① to ②.

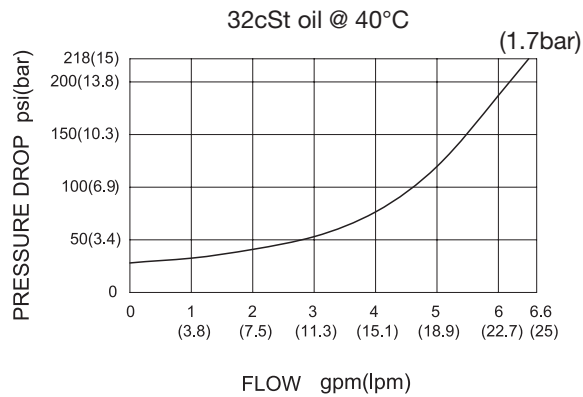
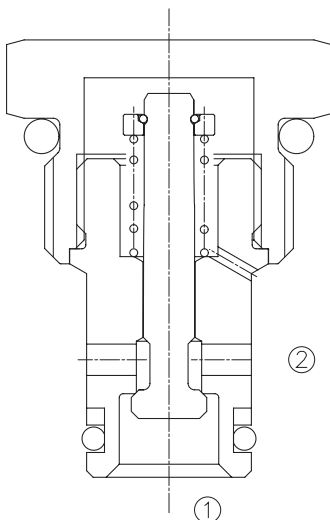
SYMBOL



SPECIFICATIONS

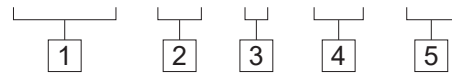
Operating Pressure	350bar
Flow	See PRESSURE DROP VS.FLOW graph.
Internal Leakage	2 drops/min max. at 350bar
Cracking Pressure	0.7=0.7bar 1.4=1.4bar 4.1=4.1bar 5.5=5.5bar 7.6=7.6bar
Temperature	-40°F to +250°F(-40°C to +120°C)
Filtration	See page N-1
Fluids	Mineral-based fluids with viscosities of 7.4 to 420 cSt.
Cavity	08-2, See page M-1
Housing Material	Steel & Ductile iron rated to 350bar

PRESSURE DROP VS.FLOW



TO ORDER

LCVR - 08 - P - * * - * *



1 Function
LCVR=Check Valve

2 Size
08=08 Size

3 Type
P=Poppet

4 Cracking Pressure
0.7=0.7bar
1.4=1.4bar
4.1=4.1bar
5.5=5.5bar
7.6=7.6bar

5 Port Size
Omit=None
4T=SAE4
6T=SAE6
2G=G 1/4
3G=G 3/8

※See page K-1 for detail of housing

※Other port sizes are available

D

INSTALLATION DIMENSIONS

Unit=Millimeters

