

5006-4

Counterbalance Valve

DESCRIPTION

A cartridge-style, counterbalance valve

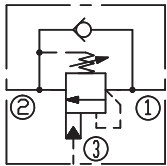
OPERATION

Counterbalance valves with pilot assist are meant for control on overrunning load. The check valve allows free flow from port ② to port ① while a direct-acting, pilot-assisted relief valve controls flow from port ① to port ②. Pilot assist at port ③ lowers the effective setting of the relief valve at a rate determined by the pilot ratio.

FEATURES

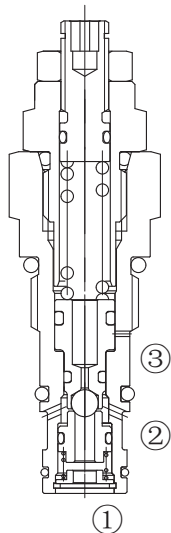
- Counterbalance valves should be set at least 1.3 times the maximum load induced pressure.
- Backpressure at port ② adds to the effective relief setting at a ratio of 1 plus the pilot ratio times the backpressure.
- Reseat exceeds 85% of set pressure when the valve is standard set. Setting lower than the standard set pressure may result in lower reseal percentages.
- Factory pressure setting established at 30cc/min(2 in³/min).

SYMBOL

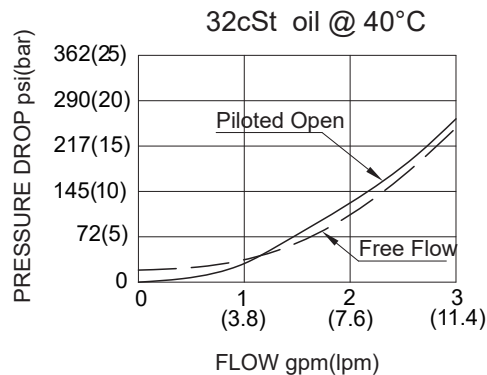


SPECIFICATIONS

| | |
|--|--|
| Max. Operating Pressure | 350bar |
| Max. Recommended Load Pressure at Max. Setting | 270bar |
| Flow | See PRESSURE DROP VS.FLOW graph. |
| Internal Leakage | 5 drops/min max. |
| Pilot Rate | 4:1 |
| Standard Spring Ranges | 13.8 to 350 bar; preset: 228bar |
| Cracking Pressure | 1.7bar |
| Temperature | -40°F to +250°F(-40°C to +120°C) |
| Filtration | See Page N-1 |
| Fluids | Mineral-based fluids with viscosities of 7.4 to 420 cSt. |
| Cavity | HYDAC FC06-3, See page M- 29 |
| Housing Material | Steel & Ductile iron rated to 350bar |



PRESSURE DROP VS.FLOW



TO ORDER

50 06 - 4 - ** - ****

1 Function
50=Counterbalance Cartridge Valve

3 Pilot Ratio
4=4:1

5 Port Size
Omit= None
4T=SAE4
6T=SAE6
2G=G 1/4
3G=G 3/8

2 Size
06=06 Size

4 Optional Pressure Setting
Omit=Standard Setting (228bar)
Example:0160=160Bar

※Other port sizes are available

G

INSTALLATION DIMENSIONS

Unit=Millimeters

