

LSV2-08-35C

5-Way,3-Position,
Spool-type Solenoid Valve

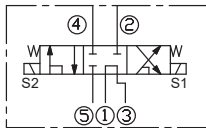
DESCRIPTION

A solenoid operated, 5-way, 3-position, direct acting, spool-type, cartridge valve

OPERATION

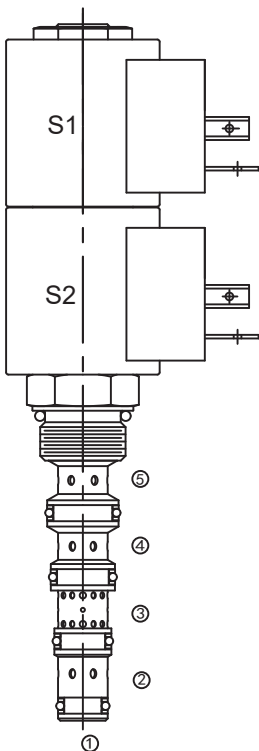
When de-energized, flow between work ports are blocked and load sense at port ① is vented to port ③. When coil S1 is energized, flow is allowed from port ⑤ to port ② and from port ④ to port ③. When coil S2 is energized, flow is allowed from port ⑤ to port ④ and from port ② to port ③. Load sense at port ① is connected to port ⑤ when spool is in shifted positions.

SYMBOL

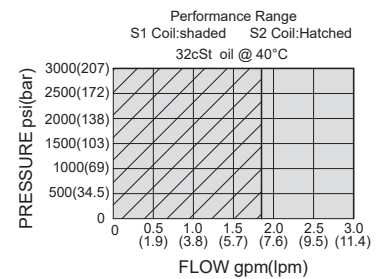
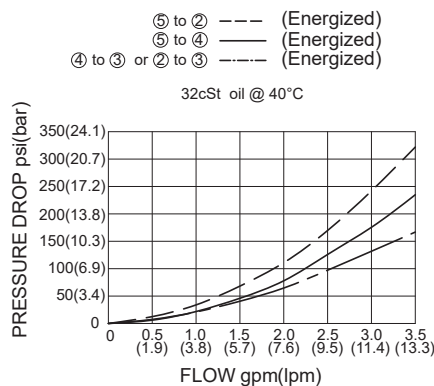


SPECIFICATIONS

Operating Pressure	207bar
Flow	See PRESSURE DROP VS.FLOW graph.
Internal Leakage	197 ml/min max. at 207bar
Temperature	-40°F to +212°F(-40°C to +100°C)
Coil Duty Rating	Continuous from 85% to 115% of nominal voltage
Filtration	See Page N-1
Fluids	Mineral-based fluids with viscosities of 7.4 to 420 cSt.
Cavity	08-5, See page M-31
Housing Material	6061-T6 aluminum alloy rated to 207Bar, Steel & Ductile iron rated to 350Bar

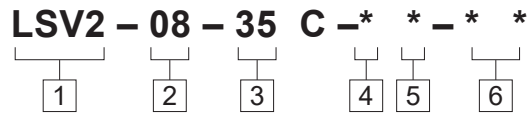


PRESSURE DROP VS.FLOW



For more information about the Performance Range
Please Consult Factory

TO ORDER



- 1 Function**
LSV2=Solenoid Valve

- 2 Size**
08=08 Size

- 3 Flow Path**
35=5-Way

- 4 Coil Voltage**
1=12 VDC
2=24 VDC
3=110 VAC
4=220 VAC
5=10 VDC
10=20 VDC

- 5 Coil Connection Type**
D= Double Lead
H= Hirschmann
C= Conduit
ER= Deutsch Connector(Water-proof Coil)
B= Double Spade

- 6 Port Size**
Omit=None
6T=SAE 6
8T=SAE 8
2G=G 1/4
3G=G 3/8

※Other port sizes are available

INSTALLATION DIMENSIONS

Coil Must Be Installed With Letter Up

Unit=Millimeters

