

# LPUV-10-3C

Pilot Unloading Valve

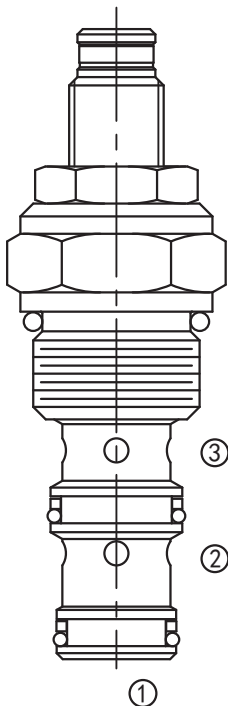
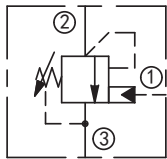
## DESCRIPTION

A cartridge-style poppet-type, normally closed, pilot unloading valve

## OPERATION

In its steady state, the valve blocks flow from port ② to port ③, until either the predetermined spring setting has been reached at port ②, or an external pilot has been applied to port ①. At this time flow is then allowed from port ② to port ③. Since the spring chamber is vented at port ③, back pressure at port ③ will directly (1:1) effect the valve setting.

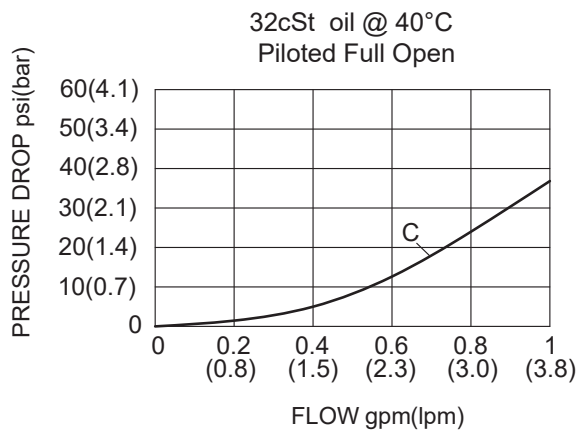
## SYMBOL



## SPECIFICATIONS

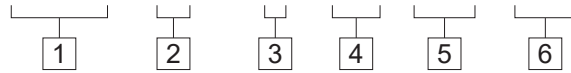
Operating Pressure	210bar
Flow	3.8L/min
Internal Leakage	① to ②:2drops/min Max.at 210bar
Standard Spring Ranges	20.7 to 103bar; Preset: 62bar 103 to 207bar; Preset: 155bar
Temperature	-40°F to +250°F(-40°C to +120°C)
Filtration	See Page N-1
Fluids	Mineral-based fluids with viscosities of 7.4 to 420 cSt.
Cavity	10-3, See page M-2
Housing Material	Steel & Ductile iron rated to 350bar

## PRESSURE DROP VS.FLOW



**TO ORDER**

**LPUV - 10 - 3C - \* \* / \*\*\*\* - \* \***



- 1 Function**  
LPUV=Pilot Unloading Valve

---

- 2 Size**  
10=10 Size

---

- 3 Unload/Reload Pressure Ratio**  
C=85%

- 4 Spring Ranges**  
15=300-1500psi(20.7-103bar)  
Preset:900psi(62bar)  
30=1500-3000psi(103-207bar)  
Preset:2250psi(155bar)

---

- 5 Optional Pressure setting**  
Omit=Standard Setting  
Example: 0250=250bar

- 6 Port Size**  
Omit=None  
6T=SAE6  
8T=SAE8  
2G=G 1/4  
3G=G 3/8

※ See page K-5 for detail of housing  
 ※ Other port sizes are available

**E**

**INSTALLATION DIMENSIONS**

Unit=Millimeters

