

LTDRV6-08

Direct-acting Differential Area
Relief Valve

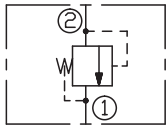
DESCRIPTION

A cartridge-style direct-acting differential area poppet-type relief valve

OPERATION

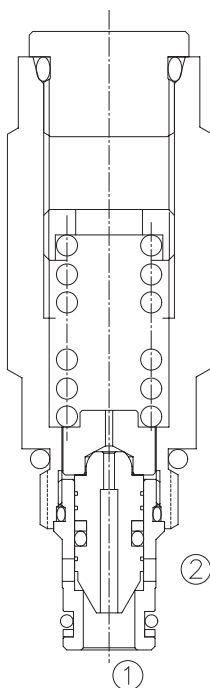
The valve blocks flow from ② to ① until sufficient pressure is present at ② to force the poppet from its seat.

SYMBOL

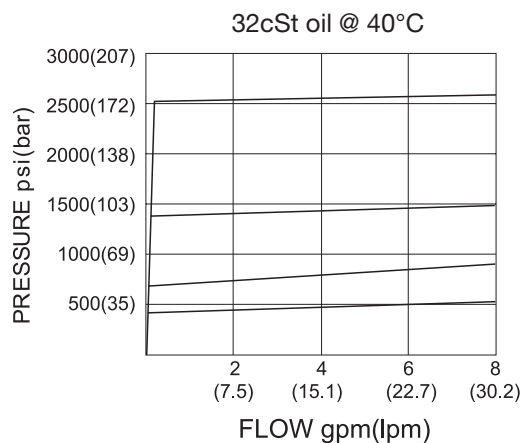


SPECIFICATIONS

Operating Pressure	250bar
Flow	See PRESSURE DROP VS. FLOW graph.
Internal Leakage	5 drops/min max. to 80% of nominal setting
Reseat Pressure	80% of cracking pressure (cracking pressure at 0.95 lpm /0.25 gpm)
Standard Spring Ranges	3.45 to 27.59 bar, preset:13.8bar 10.34 to 48.3 bar, preset: 24bar 17.24 to 89.6 bar, preset: 45bar 17.24 to 227.59 bar; preset:114bar
Temperature	-40°F to +250°F(-40°C to +120°C)
Filtration	See page N-1
Fluids	Mineral-based fluids with viscosities of 7.4 to 420 cSt.
Cavity	08-2, See page M-1
Housing Material	6061-T6 aluminum alloy rated to 207bar, Steel & Ductile iron rated to 350bar

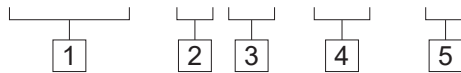


PRESSURE DROP VS.FLOW



TO ORDER

LTDRV6 - 08 * * / *** - * ***



1 Function

LTDRV6 = Tamper-resistant
Differential Area Poppet-type Relief Valve

2 Size

08=08 Size

3 Spring Ranges

4=50-400psi(3.45-27.59bar)

Preset:200psi(13.8bar)

7=150-700psi(10.34-48.3bar)

Preset:350psi(24bar)

13=250-1300psi(17.24-89.6bar)

Preset:650psi(45bar)

26=250-3300psi(17.24-227.59bar)

Preset:1650psi(114bar)

4 Optional Pressure Setting

Omit=Standard Setting

Example:0160=160Bar

5 Port Size

Omit=None

4T=SAE4

6T=SAE6

2G=G 1/4

3G=G 3/8

※ See page K-1 for detail of housing

※ Other port sizes are available

E

INSTALLATION DIMENSIONS

Unit=Millimeters

