

LFR10-2A

Adjustable Pressure-compensated
Flow Control Valve

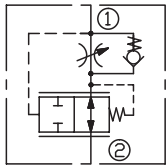
DESCRIPTION

A cartridge-style adjustable pressure-compensated flow control valve

OPERATION

The valve maintains a constant flow within specified accuracies from ① to ② regardless of downstream load pressure. When flow produces a minimum predetermined pressure differential across the compensator spool control orifice, the spool shifts against the spring force to throttle the flow and maintain the flow setting. Reverse flow is not regulated.

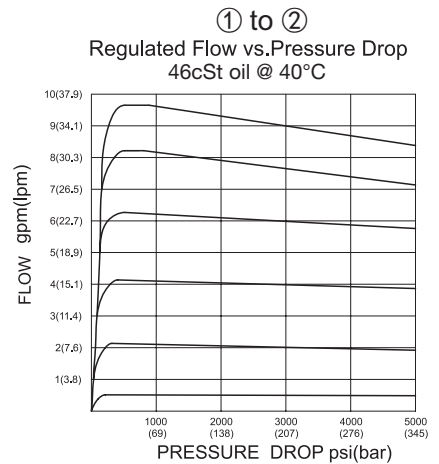
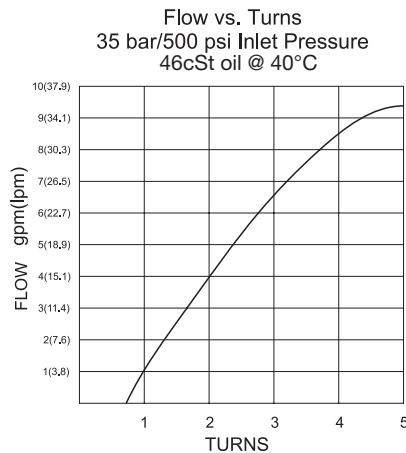
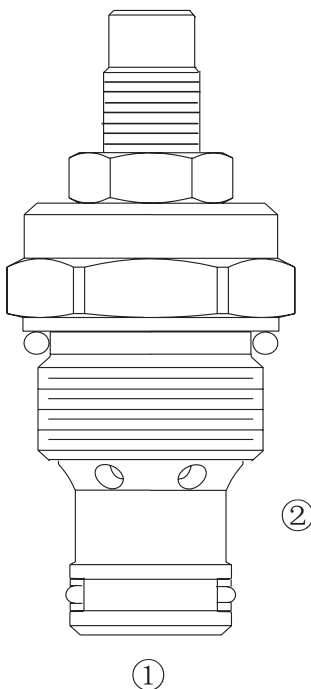
SYMBOL



SPECIFICATIONS

Operating Pressure	350 bar
Flow Setting	0.8-34 l/min.
Flow Maintenance Accuracy	±10%
Temperature	-40°F to +250°F (-40°C to +120°C)
Filtration	See page N-1
Fluids	Mineral-based fluids with viscosities of 7.4 to 420 cSt.
Cavity	10-2, See page M-2
Housing Material	Steel & Ductile iron rated to 350bar

PRESSURE DROP VS.FLOW



TO ORDER

LFR 10 - 2A - * - * * - * *

1
2
3
4
5

1 Function

LFR=Adjustable Pressure-compensated
Flow Control Valve

2 Size

10=10 Size

3 Adjustment

K=1.57" Dia Knob
Omit= 3/16" Hex Allen Head

4 Optional Flow Setting

Example:
M20=20lpm
Omit=Factory Setting At 5.7-7.6lpm

5 Port Size

Omit=None
6T=SAE6
8T=SAE8
3G=G 3/8
4G=G 1/2

※ See page K-4 for detail of housing
※ Other port sizes are available

F

INSTALLATION DIMENSIONS

Unit=Millimeters

