

DESCRIPTION

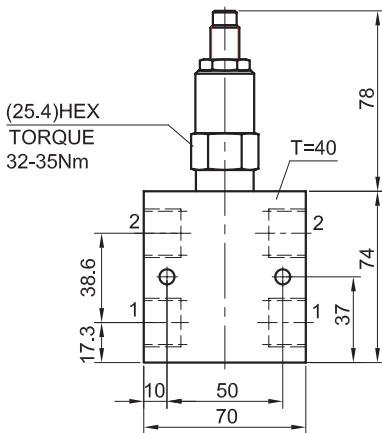
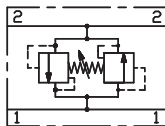
A manifold bi-directional relief valve

OPERATION

The valve is a direct-acting, dual cross-over relief valve in a single cartridge format. When pressure at either port exceeds the nominal setting value, flow will be transmitted to the opposite port. Back pressure at either port will affect the nominal setting of the opposite port on a 1 :1 basis.

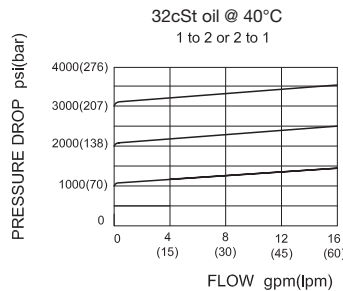
For correlation purposes, pre-set value will be measured at port ② .Pressure at port ① will not exceed ±150 psi from the port ② value.

SYMBOL

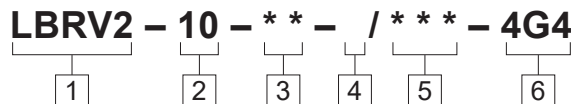


SPECIFICATIONS

Operating Pressure	207bar
Standard Spring Ranges	pressure is set at port② , 14 to 168 bar; 100 to 210 bar;
Reseat Pressure	80% of cracking pressure (cracking pressure at 0.95 lpm /0.25 gpm)
Maximum Difference For Cracking Pressure In Both Directions	10.5 bar (150 psi)
Flow	See performance chart
Internal Leakage	when reseal to 80% of cracking Pressure: 33 ml/min.
Temperature	-40°F to +250°F(-40°C to +120°C)
Filtration	See page N-1
Fluids	Mineral-based fluids with viscosities of 7.4 to 420 cSt.
Cavity	10-2, See page M-2
Housing Material	6061-T6 aluminum alloy rated to 207bar, Steel & Ductile iron rated to 350bar



TO ORDER



<p>1 Function LBRV2=Adjustable,Bi-directional Relief Valve</p>	<p>4 Adjustment K=1-1/2" Dia Knob Omit=1/4" Hex Allen Head</p>	<p>6 Port Size 4G4=4 G 1/2</p>
<p>2 Size 10=10 Size</p>	<p>5 Optional Pressure Setting Omit=Standard Setting Example:0150=150Bar</p>	<p>※See page K-4 for detail of housing ※Other port sizes are available</p>
<p>3 Spring Ranges 24=300 to 2400psi(20 to 168bar) Preset:1000psi(69bar) 30=1450 to 3000psi(100 to 210bar) Preset:2000psi(138bar)</p>		