

Mobile Hydraulics

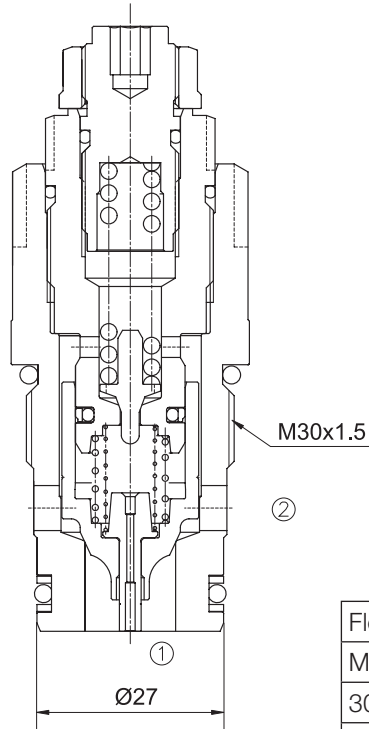


LPOSRV2-M30

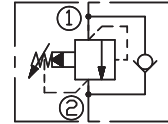
(Cracking Pressure:2 bar)

DESCRIPTION

A pilot-operated pressure limitation and feed valve.



SYMBOL



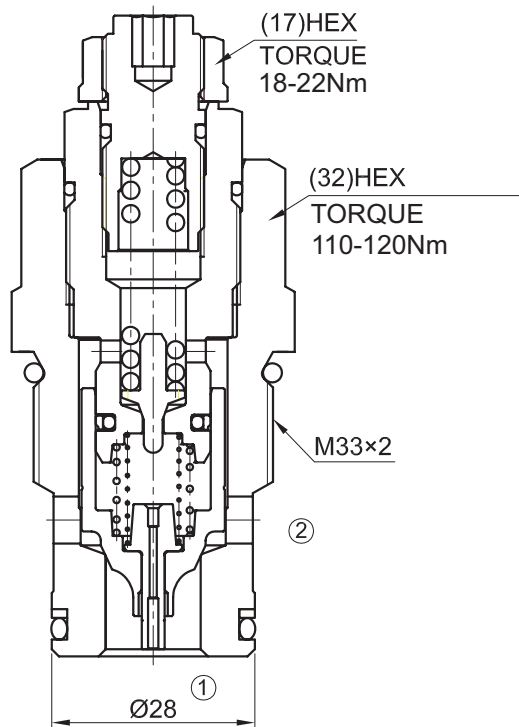
Flow:	200L/min
Max. Pressure:	42Mpa
30mm HEX Torque:	90-100Nm
Cavity:	Rexroth-LG, see page(M-15)

LPOSRV-M33

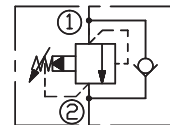
(Cracking Pressure:2 bar)

DESCRIPTION

A pilot-operated pressure limitation and feed valve.



SYMBOL



Flow:	200L/min
Max. Pressure:	42Mpa
32mm HEX Torque:	110-120Nm
Cavity:	Consult Factory