

LMP-08-4-L

Manual 4-Way Pull-to-shift
Directional Valve

DESCRIPTION

A cartridge-style manual 4-way, pull-to-shift, directional valve.

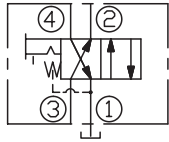
OPERATION

In its steady-state, spring-offset position, the valve directs flow from ③ to ②, and from ④ to ①. In the actuated (pulled) position, the cartridge directs flow from ③ to ④, and from ② to ①. The spring chamber is vented at ①.

Note: Pressure at port ① will directly act on the spool and spring. Port ① is intended to be a tank port only. Series operation is prohibited due to the tank port ① pressure rating.

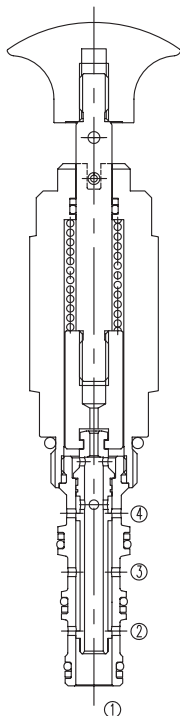
A unique pull-and-rotate feature for holding the positive actuated position is optional. A 90° rotation is required to position at the hold slot. The valve resets to spring-return de-actuated with a slight pull and a 90° turn from the locked actuated position.

SYMBOL

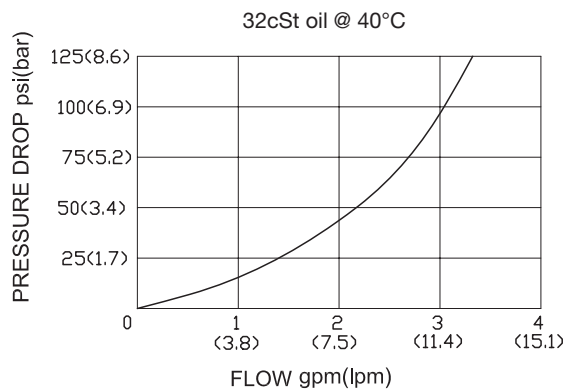


SPECIFICATIONS

Operating Pressure	207bar On ②, ③ and ④ 240bar On ① Max. 14bar
Flow	See PRESSURE DROP VS. FLOW graph.
Internal Leakage	82 cc/min max.
Temperature	-40°F to +250°F (-40°C to +120°C)
Filtration	See page N-1
Fluids	Mineral-based fluids with viscosities of 7.4 to 420 cSt.
Cavity	08-4, See page M-1
Housing Material	6061-T6 aluminum alloy rated to 207bar, Steel & Ductile iron rated to 350bar

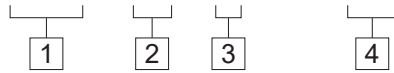


PRESSURE DROP VS. FLOW



TO ORDER

LMP - 08 - 4 - L - * *



1 Function

LMP=Manual, Spring
Return, Pull-to-shift

2 Size

08=08 Size

3 Flow Path

4=4-Way

4 Port Size

Omit=None
4T=SAE4
6T=SAE6
2G=G 1/4
3G=G 3/8

※ See page K-3 for detail of housing
※ Other port sizes are available

D

INSTALLATION DIMENSIONS

Unit=Millimeters

