

LDPR-10

Direct-acting Pressure Reducing/
Relieving Valve

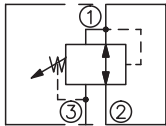
DESCRIPTION

A cartridge-style direct-acting spool-type pressure reducing/relieving valve

OPERATION

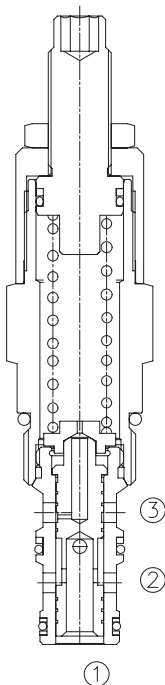
In its steady state, the valve allows flow to pass bi-directionally from ② to ①, with the spring chamber constantly drained at ③. On attainment of a pre-determined pressure at ①, the cartridge shifts to restrict input flow at ②, thereby regulating pressure at ①. In this mode, the valve will also relieve ① to ③ at approximately 10 bar over the reducing setting.

SYMBOL

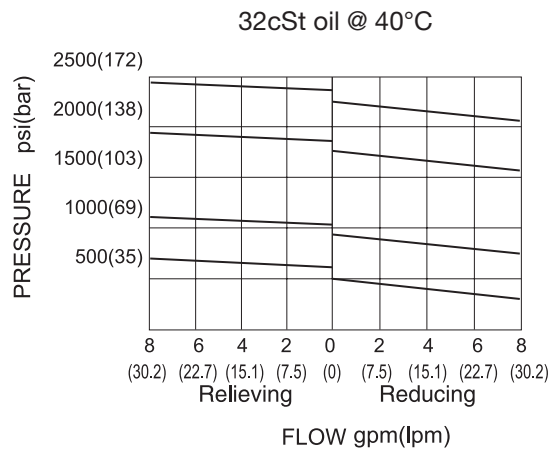


SPECIFICATIONS

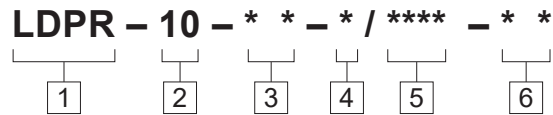
Operating Pressure	207bar
Flow	See performance chart
Internal Leakage	from ② to ③ 82 cc/min max. at ΔP 207 bar
Standard Spring Ranges	5.5 to 27.6 bar, preset:13.8bar 13.8 to 55.2 bar, preset:27.6bar 20.7 to 103 bar, preset:51.5bar 27.6 to 145 bar, preset:72.5bar
Temperature	-40°F to +250°F(-40°C to +120°C)
Filtration	See page N-1
Fluids	Mineral-based fluids with viscosities of 7.4 to 420 cSt.
Cavity	10-3, See page M-2
Housing Material	6061-T6 aluminum alloy rated to 207bar, Steel & Ductile iron rated to 350bar



PRESSURE DROP VS.FLOW



TO ORDER



<p>1 Function LDPR=Direct-acting Spool-type Pressure Reducing/Relieving Valve</p>	<p>3 Spring Ranges 4=80-400psi(5.5-27.6bar) Preset:200psi(13.8bar) 8=200-800psi(13.8-55.2bar) Preset:400psi(27.6bar) 15=300-1500psi(20.7-103bar) Preset:750psi(51.5bar) 21=400-2100psi(27.6-145bar) Preset:1050psi(72.5bar)</p>	<p>5 Optional Pressure Setting Omit=Standard Setting Example:0100=100Bar</p>
<p>2 Size 10=10 Size</p>	<p>4 Adjustment K=1-1/2" Dia Knob Omit = 1/4" Hex Allen Head</p>	<p>6 Port Size Omit=None 6T=SAE6 8T=SAE8 2G=G 1/4 3G=G 3/8</p>

※ See page K-5 for detail of housing
※ Other port sizes are available

INSTALLATION DIMENSIONS

Unit=Millimeters

