

LSV-08-34-C

4-Way,3-Position,
Spool-type Solenoid Valve

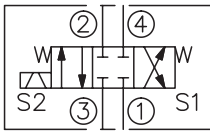
DESCRIPTION

A solenoid operated, 4-way, 3-position, closed center spool-type cartridge valve.

OPERATION

When de-energized, the valve blocks flow at all ports. When the coil S1 is energized, the valve allows flow from ③ to ④ and from ② to ① ; When the coil S2 is energized, the valve allows flow from ③ to ② and from ④ to ① .

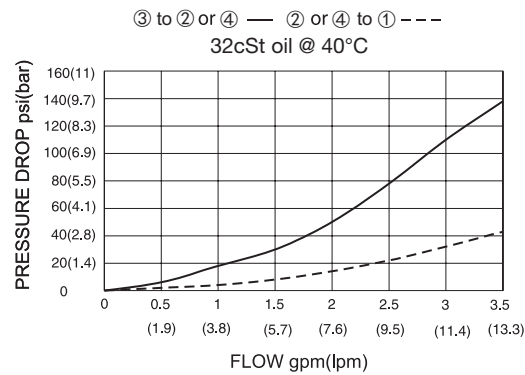
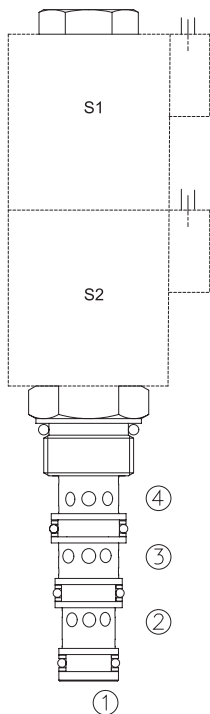
SYMBOL



SPECIFICATIONS

Operating Pressure	207bar
Flow	See PERFORMANCE CHARACTERISTIC graph.
Internal Leakage	164cc/min max.
Temperature	-40°F to +212°F(-40°C to +100°C)
Coil Duty Rating	Continuous from 85% to 115% of nominal voltage
Filtration	See page N-1
Fluids	Mineral-based fluids with viscosities of 7.4 to 420 cSt.
Cavity	08-4, See page M-1
Housing Material	6061-T6 aluminum alloy rated to 207bar, Steel & Ductile iron rated to 350bar

PRESSURE DROP VS.FLOW



TO ORDER

LSV - 08 - 34 - C - * * - * *

┌───┐
┌───┐
┌───┐
┌───┐
┌───┐
┌───┐
┌───┐

1
2
3
4
5
6
7

- 1 **Function**
 LSV=Solenoid Valve
- 2 **Size**
 08=08 Size
- 3 **Flow Path**
 34=4-Way
- 4 **Style**
 C=Closed Center

- 5 **Coil Voltage**
 1=12 VDC
 2=24 VDC
 3=110 VAC
 4=220 VAC
 5=10 VDC
 7=48 VDC
 8=24 VAC
- 6 **Coil Connector Type**
 D= Double Lead
 S= Single Lead
 H= Hirschmann
 ER= Deutsch Connector(Water-proof Coil)
 E= Single Stud
 B= Double Spade

- 7 **Port Size**
 Omit=None
 4T=SAE 4
 6T=SAE 6
 2G=G 1/4
 3G=G 3/8
- ※ See page K-3 for detail of housing
 ※ Other port sizes are available

INSTALLATION DIMENSIONS

Coil Must Be Installed With Letter Up

Unit=Millimeters

