

LDPR-08

Direct-acting Pressure Reducing/
Relieving Valve

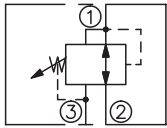
DESCRIPTION

A cartridge-style direct-acting spool-type pressure reducing/relieving valve

OPERATION

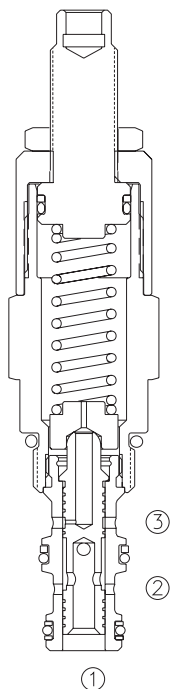
In its steady state, the valve allows flow to pass bi-directionally from ② to ①, with the spring chamber constantly drained at ③. On attainment of a pre-determined pressure at ①, the cartridge shifts to restrict input flow at ②, thereby regulating pressure at ①. In this mode, the valve will also relieve ① to ③ at approximately 10 bar over the reducing setting.

SYMBOL

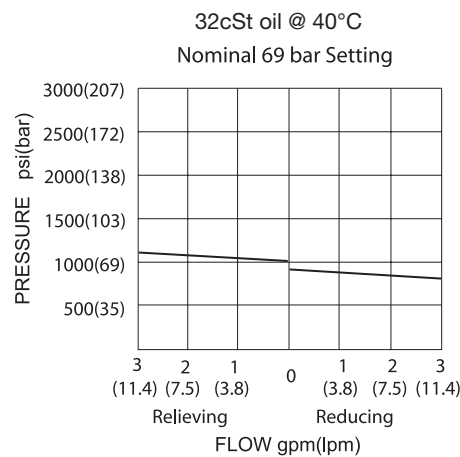


SPECIFICATIONS

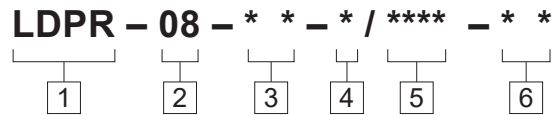
Operating Pressure	207bar
Flow	See performance chart
Internal Leakage	from ② to ③ 82 cc/min max. at ΔP 207 bar
Standard Spring Ranges	3.4 to 20.7 bar, preset:10.3bar 6.9 to 41.4 bar, preset:20.7bar 20.7 to 82.8 bar, preset:41.4bar 34.5 to 152 bar, preset: 76bar
Temperature	-40°F to +250°F(-40°C to +120°C)
Filtration	See page N-1
Fluids	Mineral-based fluids with viscosities of 7.4 to 420 cSt.
Cavity	08-3, See page M-1
Housing Material	6061-T6 aluminum alloy rated to 207bar, Steel & Ductile iron rated to 350bar



PRESSURE DROP VS.FLOW



TO ORDER



1 Function
LDPR=Direct-acting Spool-type
Pressure Reducing/Relieving Valve

2 Size
08=08 Size

3 Spring Ranges
3=50-300psi(3.4-20.7bar)
Preset:10.3bar
6=100-600psi(6.9-41.4bar)
Preset:20.7bar
12=300-1200psi(20.7-82.8bar)
Preset:41.4bar
22=500-2200psi(34.5-152bar)
Preset:76bar

4 Adjustment
K=1-1/2" Dia Knob
Omit = 1/4" Hex Allen Head

5 Optional Pressure Setting
Omit=Standard Setting
Example:0100=100bar

6 Port Size
Omit=None
4T=SAE4
6T=SAE6
2G=G 1/4
3G=G 3/8

※ See page K-2 for detail of housing
※ Other port sizes are available

E

INSTALLATION DIMENSIONS

Unit=Millimeters

