

LCBSN-20-S3-10

Counterbalance Valve

DESCRIPTION

A cartridge-style standard capacity counterbalance valve

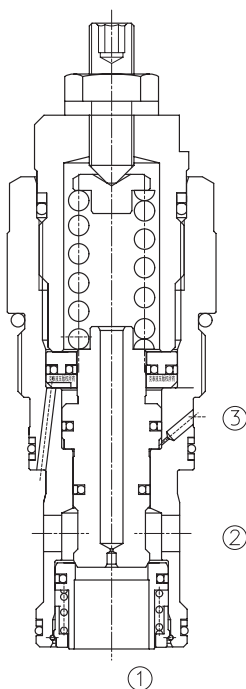
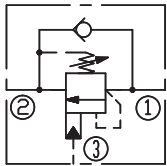
OPERATION

Counterbalance valves with pilot assist are meant for control on overrunning load. The check valve allows free flow from port ② to port ① while a direct-acting, pilot-assisted relief valve controls flow from port ① to port ② . Pilot assist at port ③ lowers the effective setting of the relief valve at a rate determined by the pilot ratio.

FEATURES

- Counterbalance valves should be set at least 1.3 times the maximum load induced pressure.
- Factory pressure setting established at 5l/min.

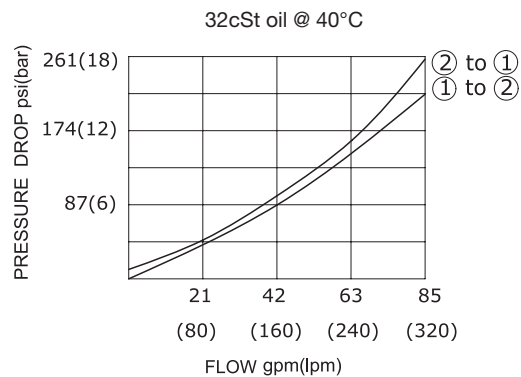
SYMBOL



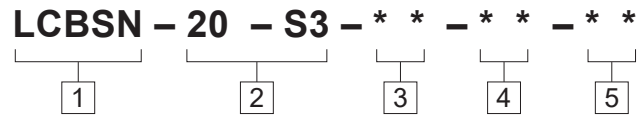
SPECIFICATIONS

Max. Setting	350 bar
Max. Recommended Load Pressure at Max. Setting	270 bar
Load Holding Pressure	350 bar
Cracking Pressure	0.8 bar
Flow	See PRESSURE DROP VS.FLOW graph.
Internal Leakage	5 -10 drops/min. at 80% of pressure setting(max. 40 drops/min.)
Pilot Ratio	10=8:1; 03=4:1
Temperature	-40°F to +250°F(-40°C to +120°C)
Filtration	See page N-1
Fluids	Mineral-based fluids with viscosities of 7.4 to 420 cSt.
Cavity	20-S3, See page M-10
Housing Material	Steel & Ductile iron rated to 350bar

PRESSURE DROP VS.FLOW



TO ORDER



<p>1 Function LCBSN=Counterbalance Cartridge Valve</p>	<p>4 Spring Ranges LJN:40=2000-6000psi(140-420bar) Preset:5000psi(350bar)(135bar/turn) LKN:20=1000-3000psi(70-210bar) Preset:2900psi(200bar)(87bar/turn)</p>	<p>5 Port Size Omit=None 20T=SAE20</p>
<p>2 Size 20-S3=20-S3 Size</p>		<p>※Other port sizes are available</p>
<p>3 Pilot Ratio 10=8:1 03=4:1</p>		



INSTALLATION DIMENSIONS

Unit=Millimeters

