

# LDPCC

Piloted 3-Way Spool  
Directional Valve

## DESCRIPTION

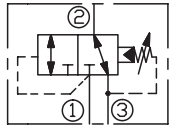
A cartridge-style 3-way pilot-operated spool-type internal-vent directional valve

## OPERATION

Pilot-operated, 3-way directional cartridges valve, normally ① blocked, ② to ③ open, the valve shifts when the pressure differential between port ① and port ③ exceeds the setting.

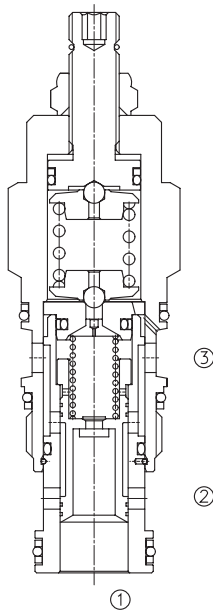
Pressure at port ③ is directly additive to the setting of the valve. Because of this, port ③ may not be useable as a work port in your circuit. Port ③ can be blocked to prevent the valve from shifting and Maximum pressure at port ③ should be limited to 3000 psi (210 bar).

## SYMBOL

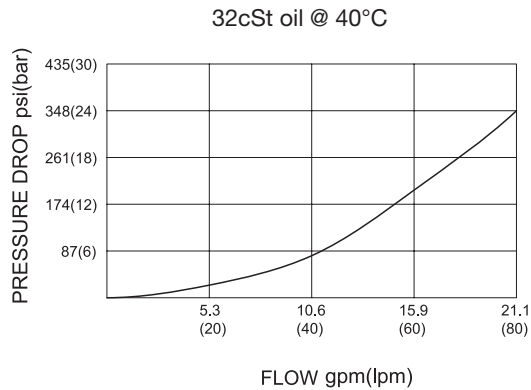


## SPECIFICATIONS

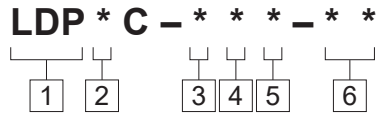
Operating Pressure	350bar
Flow	See PRESSURE DROP VS.FLOW graph.
Internal Leakage	15 cc/min max. at 70 bar
Standard Spring Ranges	A: 100 - 3000 psi (7 - 210 bar), Preset:1000 psi (70 bar) B: 50 - 1500 psi (3.5 - 105 bar), Preset:1000 psi (70 bar) D: 25 - 800 psi (1.7 - 55 bar), Preset: 400 psi (28 bar) E: 25 - 400 psi (1.7 - 28 bar), Preset: 200 psi (14 bar) H: 35 - 3000 psi (2.4 - 210 bar), Preset:1000 psi (70 bar) W: 100 - 4500 psi (7 - 315 bar), Preset:1000 psi (70 bar)
Temperature	-40°F to +250°F(-40°C to +120°C)
Filtration	See page N-1
Fluids	Mineral-based fluids with viscosities of 7.4 to 420 cSt.
Cavity	SUN T-2A, See page M-6
Housing Material	Steel & Ductile iron rated to 350bar



## PRESSURE DROP VS.FLOW



**TO ORDER**



- 1 Function**  
LDP=Piloted Three-way Spool Directional Valve

---

- 2 Flow**  
C=60L/min.

---

- 3 Control**  
L=Standard Screw Adjustment

---

- 4 Spring Ranges**  
 A: 100-3000psi(7 - 210bar), Preset:(1000psi)70bar  
 B 50 -1500psi(3.5-105bar), Preset:(1000psi)70bar  
 D: 25 -800 psi(1.7-55 bar), Preset:(400 psi)28bar  
 E: 25 -400 psi(1.7-28 bar), Preset:(200 psi)14bar  
 H: 35 -3000psi(2.4-210bar). Preset:(1000psi)70bar  
 W: 100-4500psi(7 - 315bar), Preset:(1000psi)70bar  
 Factory Pressure setting established at 15L/min;

- 5 Seal Kits**  
 N=Buna N  
 V=Viton

- 6 Port Size**  
 Omit=None  
 8T=SAE8  
 10T=SAE10  
 3G=G 3/8  
 4G=G 1/2

※ See page K-23—K24 for detail of housing  
 ※ Other port sizes are available

**INSTALLATION DIMENSIONS**

Unit=Millimeters

