

LCBRC78

Counterbalance Valve

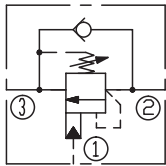
DESCRIPTION

A cartridge-style standard capacity counterbalance valve

OPERATION

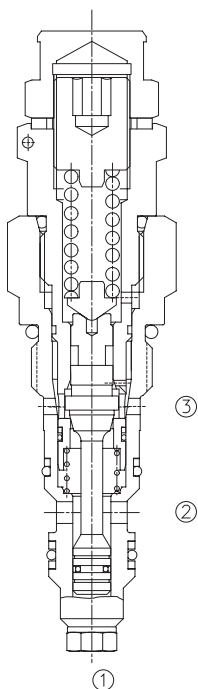
When pressure at ③ rises above the spring bias pressure, the check seat is pushed away from the piston and flow is allowed from ③ to ②. When load pressure at ② rises above the pressure setting, the direct-acting, differential area relief function is activated and flow is relieved from ② to ③. With pilot pressure at ①, the pressure setting is reduced in proportion to the stated ratio of the valve, until fully open with free-flow from ② to ③. The spring chamber is drained to ③, and any back-pressure at ③ is additive to the pressure setting in all functions.

SYMBOL

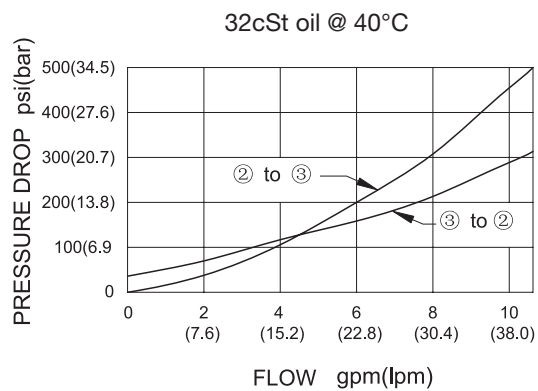


SPECIFICATIONS

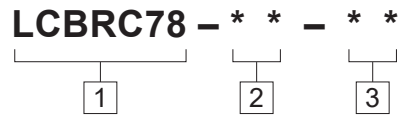
Max. Operating Pressure	350bar
Flow	See PRESSURE DROP VS.FLOW graph.
Pressure Setting	Factory pressure setting established at 5 l/min.
Pilot Ratio	4.1:1
Check Cracking Pressure	2.7bar
Temperature	-40°F to +250°F(-40°C to +120°C)
Filtration	See page N-1
Fluids	Mineral-based fluids with viscosities of 7.4 to 420 cSt.
Cavity	10-3, See page M-2
Housing Material	Steel & Ductile iron rated to 350bar



PRESSURE DROP VS.FLOW



TO ORDER



1 Function
 LCBRC78= Counterbalance
 Cartridge Valve

2 Spring Ranges
 50=1450-5000psi(100-350bar)
 Preset:3000psi(210bar)
 (Q=5L/min)

3 Port Size
 Omit=None
 6T=SAE6
 8T=SAE8
 2G=G 1/4
 3G=G 3/8

※ See page K-5 for detail of housing
 ※ Other port sizes are available

G

INSTALLATION DIMENSIONS

Unit=Millimeters

