

LCBIG/LCBIH

Counterbalance Valve
Standard

DESCRIPTION

A cartridge-style standard capacity counterbalance valve

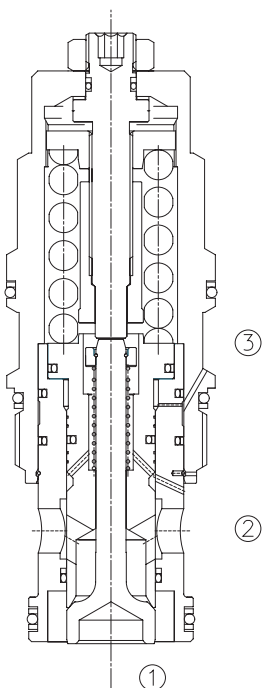
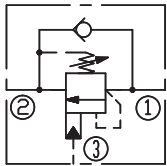
OPERATION

Counterbalance valves with pilot assist are meant for control on overrunning load. The check valve allows free flow from port ② to port ① while a direct-acting, pilot-assisted relief valve controls flow from port ① to port ②. Pilot assist at port ③ lowers the effective setting of the relief valve at a rate determined by the pilot ratio.

FEATURES

- Counterbalance valves should be set at least 1.3 times the maximum load induced pressure.
- Backpressure at port ② adds to the effective relief setting at a ratio of 1 plus the pilot ratio times the backpressure.
- Reseat exceeds 85% of set pressure when the valve is standard set. Setting lower than the standard set pressure may result in lower reseal percentages.
- Factory pressure setting established at 30cc/min(2 in³/min).

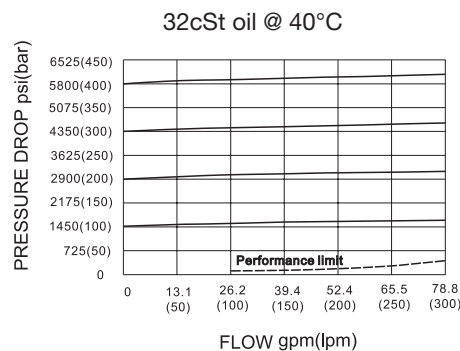
SYMBOL



SPECIFICATIONS

Max. Setting	350 bar
Max. Recommended Load Pressure at Max. Setting	270 bar
Flow	See PRESSURE DROP VS.FLOW graph.
Internal Leakage	5 drops/min.
Pilot Ratio	(LCBIG)4.5:1; (LCBIH)10: 1
Temperature	-40°F to +250°F(-40°C to +120°C)
Filtration	See page N-1
Fluids	Mineral-based fluids with viscosities of 7.4 to 420 cSt.
Cavity	SUN T-19A, See page M-9
Housing Material	6061-T6 aluminum alloy rated to 207bar, Steel & Ductile iron rated to 350bar

PRESSURE DROP VS.FLOW



TO ORDER

LCB * * - * * * - * *

1 2 3 4 5 6 7

1 Function
LCB=Counterbalance Cartridge Valve

2 Flow
I=480L/min

3 Pilot Ratio
G=4.5:1
H=10:1

4 Control
L=Standard Screw Adjustment

5 Spring Ranges
J=2000-5000psi(140-350bar)
Preset:3000psi(210bar)(Check:1.7bar)
K=1000-2500psi(70-175bar)
Preset:2000psi(140bar)(Check:1.7bar)
C=2000-5000psi(140-350bar)
Preset:3000psi(210bar)(Check:0.3bar)
D=1000-2500psi(70-175bar)
Preset:2000psi(140bar)(Check:0.3bar)

6 Seal Kits
N= Buna N
V=Viton

7 Port Size
Omit=None
16T=SAE16
20T=SAE20
8G=G 1

※ See page K-15 for detail of housing
※ Other port sizes are available

G

INSTALLATION DIMENSIONS

Unit=Millimeters

Number of Counter-clockwise Turns : 3.75 Turns

