

LLPFC

Normally Open, Modulating Element

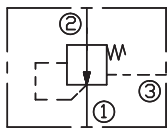
DESCRIPTION

A cartridge-style normally open, modulating element

OPERATION

Normally open modulating elements without an internal orifice act as a restrictive compensator to maintain a constant pressure drop across an orifice, regardless of variations in upstream or downstream pressure.

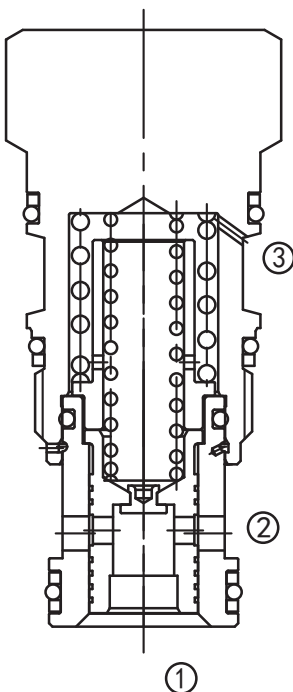
SYMBOL



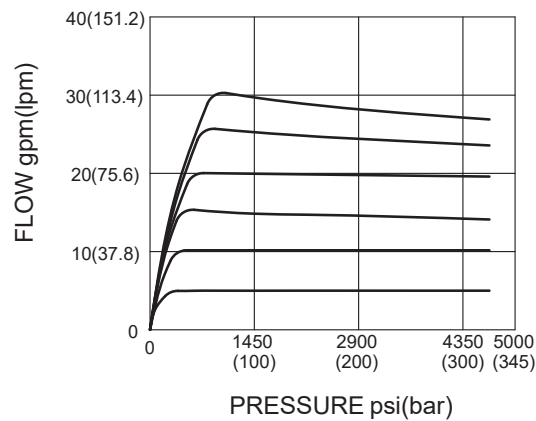
SPECIFICATIONS

Operating Pressure	350bar
Flow	See PRESSURE DROP VS.FLOW graph.
Temperature	-40°F to +250°F(-40°C to +120°C)
Filtration	See Page N-1
Fluids	Mineral-based fluids with viscosities of 7.4 to 420 cSt.
Cavity	SUN T-2A, See page M-6
Housing Material	Steel & Ductile iron rated to 350bar

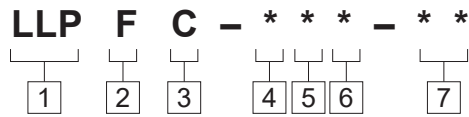
PRESSURE DROP VS.FLOW



LLPFC"H"Range
Pressure Differential
P2-P3 VS.FLOW
32cSt oil @ 40°C



TO ORDER



1 Function
LLP=Normally Open, Modulating Element

2 Capacity
F=120L/min

3 Pilot Source
C=External Pilot Source

4 Control
X=Non-adjustable

5 Differential Pressure
H=200psi(14bar)
D=50psi(3.5bar)
F=100psi(7bar)
G=150psi(10.5bar)

6 Seal
N=Buna N
V=Viton

7 Port Size

Omit=None
6T=SAE 6
8T=SAE 8
2G=G 1/4
3G=G 3/8

※ See page K-23 for detail of housing
※ Other port sizes are available

INSTALLATION DIMENSIONS

Unit=Millimeters

